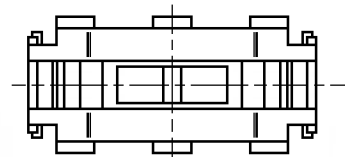
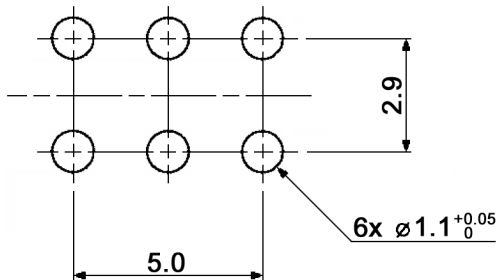
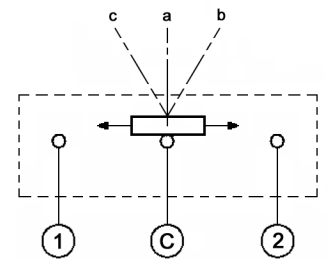


**P.C.B. MOUNTING
HOLE DIMENSIONS t=0.8mm**



CIRCUIT DIAGRAM



Specifications:

- Contact rating: 10mA, 5V
- Contact resistance: 500mOhm max.
- Insulation resistance: 1000MOhm min. at 100V DC for 1 minute
- Dielectric strength: 100V AC (50/60Hz, 2mA) for 1 minute
- Operating temperature: -40°C to +85°C
- Mechanical life: 3 000 000 cycles
- Operating force: 35gf max.
- Soldering conditions: wave soldering: pre-heat 100°C max., 100sec. max.
wave: 260°C max., 5sec. max.

- Material: Base / slider: PA, black
Contact plate: C5210R-EH, silver plated
Frame: SPTE, tin plated
Terminal: C5191R-EH, silver plated

Compliance: RohS II (2011/65/EU)

Tolerances: up to 10: ±0.20mm above 10-50: ±0.30mm	Date	Name
	09/13	dr
Rename	06/16	dr
Modifications	Date	Name

DT 316 C

30 29 16

knitter-switch

Page

1/1