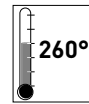


Dual-in-line Switches for SMT



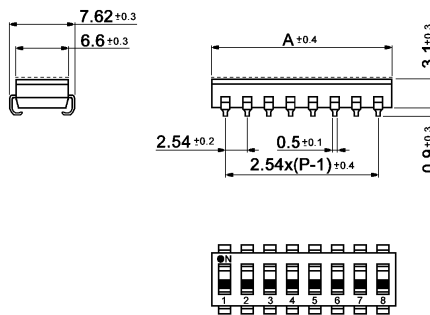
Specifications:

Contact rating:	50 V DC, 100 mA (non-switching), 24 V DC, 25 mA (switching)
Contact resistance:	<50 mΩ
Insulation resistance:	>1000 MΩ at 100 V DC
Dielectric strength:	500 V, 50 Hz for the duration of 1 minute
Operating temperature:	-40 °C to +85 °C
Mechanical life:	minimum 5 000 operations per pole
Material:	PA9T meets UL 94 V-0
Contacts:	gold-plated over nickel
Terminals:	tin-plated
Construction:	case sealed, slide recessed front sealed with protective tape
Mounting:	on pc-board – SMD
Slide position:	OFF

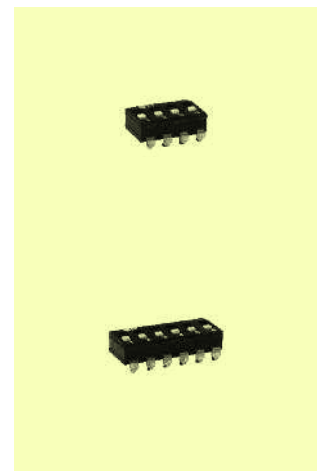
Models:

Series SBS 600xx J

Type	Poles	Length (A)
SBS 60002 J	2	5.04 mm
SBS 60003 J	3	7.58 mm
SBS 60004 J	4	10.12 mm
SBS 60005 J	5	12.66 mm
SBS 60006 J	6	15.20 mm
SBS 60007 J	7	17.74 mm
SBS 60008 J	8	20.28 mm
SBS 60009 J	9	22.82 mm
SBS 60010 J	10	25.36 mm
SBS 60012 J	12	30.43 mm



washable



Packing: sticks or tapes
for order on tapes: additional to type number: T
example of order: SBS 60006 TJ

Models:	Stick	Tape/Reel	Tape width (e)
SBS 60002 J	100 pieces	1300 pieces; Ø 330 mm	24.0 mm
SBS 60003 J	68 pieces	1000 pieces; Ø 330 mm	16.0 mm
SBS 60004 J	51 pieces	1000 pieces; Ø 330 mm	24.0 mm
SBS 60005 J	40 pieces	1000 pieces; Ø 330 mm	24.0 mm
SBS 60006 J	34 pieces	1000 pieces; Ø 330 mm	32.0 mm
SBS 60007 J	29 pieces	1000 pieces; Ø 330 mm	32.0 mm
SBS 60008 J	26 pieces	1000 pieces; Ø 330 mm	32.0 mm
SBS 60009 J	22 pieces	1000 pieces; Ø 330 mm	44.0 mm
SBS 60010 J	20 pieces	1000 pieces; Ø 330 mm	44.0 mm
SBS 60012 J	17 pieces	1000 pieces; Ø 330 mm	44.0 mm