

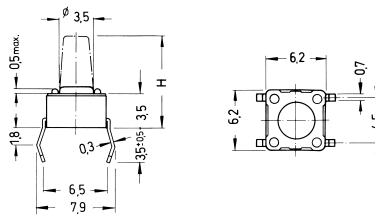
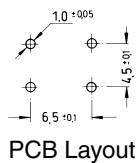
# Tact Switches

## Specifications:

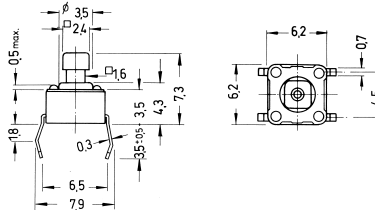
Contact rating:	12 V DC, 50 mA
Contact resistance:	< 100 mΩ
Insulation resistance:	> 100 MΩ at 500 V DC
Dielectric strength:	250 V, 50 Hz for the duration of 1 minute
Operating temperature:	-40 °C to +85 °C
Electrical life:	1.0 N/1.6 N: minimum 200 000 cycles 2.6 N: minimum 100 000 cycles 3.2 N/5.2 N: minimum 50 000 cycles
Operating force:	see ordering code
Contacts:	phosphor bronze, silver-plated
Terminals:	PC terminals, brass, silver-plated
Material:	cover: stainless steel base and stem: nylon meets UL 94 V-0; caps ABS
Mounting:	on pc-board
Soldering conditions:	hand-soldering – max.: 30 W, 2 sec, 320 °C wave-soldering – max.: 5 sec, 260 °C subject to PCB 1.6 mm thickness
Travel:	0.25 mm + 0.2/- 0.1 mm

## Models:

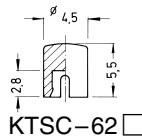
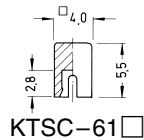
TS 6



TS 644



Caps for TS 644



## Ordering code:

Switches TS 6

### Dimension H

- 1 4.3 mm
- 2 5.0 mm
- 3 7.0 mm
- 44 7.3 mm\*
- 5 9.5 mm
- 6 13.0 mm
- 8 11.3 mm
- 9 19.5 mm

\* only with square stem

### Colour of stem for operating force:

- K 1.0 N, black
- N 1.6 N, brown
- R 2.6 N, red
- S 3.2 N, salmon
- Y 5.2 N, yellow

Caps KTSC-6

### Cap type:

- 1 square
- 2 round

### Cap colour:

- Y yellow
- B blue
- R red
- I ivory
- K black
- G green