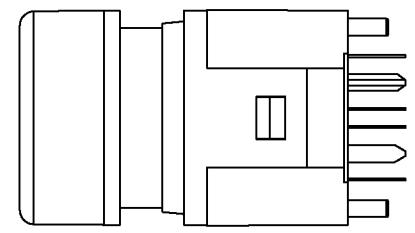
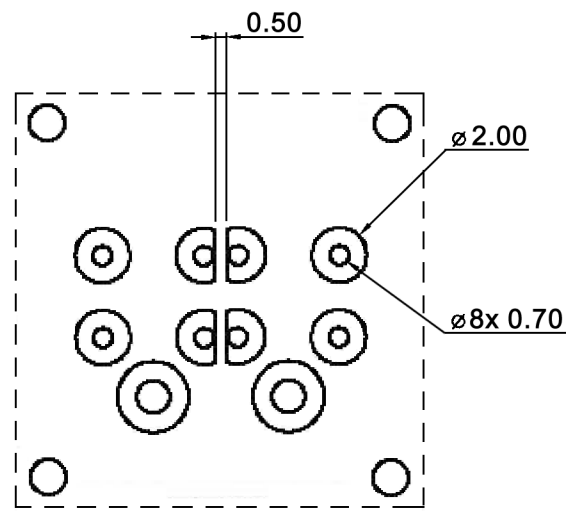


P.C.B. COPPER CLAD DESIGN



Tolerances: 0.00 to 30.00: ±0.20mm		Date	Name
30.01 to 80.00: ±0.25mm		03/10	dr
Material	08/13	dr	
Ordering example	07/11	dr	
Revised	12/10	dr	
Dimensions	10/10	dr	
LED specifications	10/10	dr	
Modifications	Date	Name	

# LP 14 CG-deeee-PC

**knitter-switch**

**30 20 53**

Page

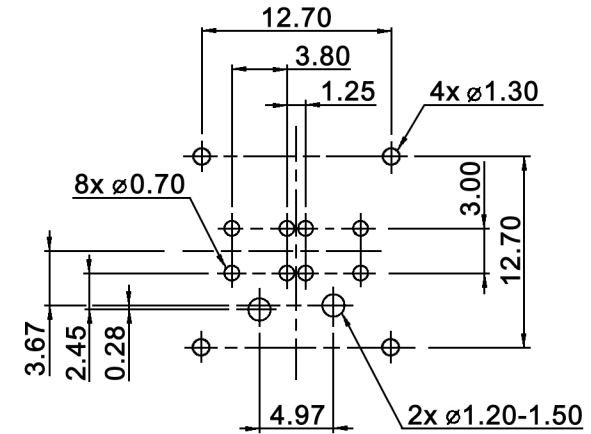
1/3

**Specifications:**

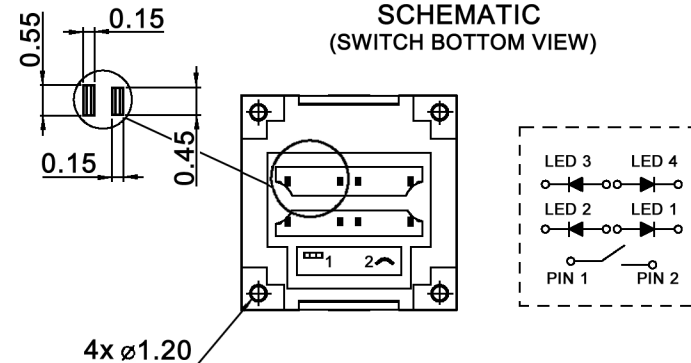
Contact rating: 100mA, 12V DC (resistive load)  
 Contact resistance: 20mOhm max.  
 Insulation resistance: 100MOhm min. at 500V DC  
 Dielectric strength: 600V AC for 1 minute  
 Operating temperature: -40°C to +85°C  
 Electrical life: 500 000 cycles min.  
 Operating force: 180 +/-50gf  
 Soldering conditions: auto-soldering: max.: 260°C, 3sec.  
 Switching function: off - mom  
 Travel: 4.3mm; switching point: 2.9mm  
 Material: Terminal: phosphor bronze, tin plated over nickel  
 Movable contact: brass, gold plated over nickel  
 Lower housing / diffuser holder: PA66+33%GF (UL94V-2)  
 LED cover / upper housing: PA66 (UL94HB)  
 Plunger: PA66 (UL94HB)  
 Diffuser: PC (UL94V-0)  
 Sculptured cap: PC (UL94V-2)

Recommended insert legend: 12.8x12.8x0.1mm, polyester film

**P.C.B. MOUNTING**



**SCHEMATIC (SWITCH BOTTOM VIEW)**



Tolerances: 0.00 to 30.00: ±0.20mm		Date	Name	<b>LP 14 CG-deeee-PC</b>
30.01 to 80.00: ±0.25mm		03/10	dr	
				<b>30 20 53</b>
		<b>knitter-switch</b>		
				Page
				2/3
Modifications	Date	Name		

Cap colour (d)	Code
clear	empty
red	R
orange	O
yellow	Y
green	G
blue	B
grey	K

LED colour (e)	Code
red	R
green	G
blue	B
yellow	Y
orange	O
white	W
without LED	N

Ordering example:  
Switch with clear cap and 3 LEDs (RGB)  
LP 14 RGBN-PC

LED specifications:

	Red	Green	Blue	Yellow	Orange	White
Minimum Luminous (mcd)	70	380	50	36	70	480
Standard Luminous (mcd)	150	470	130	80	180	800
Forward Peak Current (mA)	155	150	150	150	175	150
Power Dissipation (mW)	75	102.5	120	75	75	120
Forward Voltage (V), Typ. at If = 20mA	1.85	3.10	3.30	2.10	2.00	3.30
Forward Voltage (V), Max. at If = 20mA	2.50	4.10	4.00	2.50	2.50	4.00
Reverse Voltage (V)	5	5	5	5	5	5
Dominant Wavelength (nm)	640	525	470	570	590	N/A
Spread Angle (degree)	120	120	120	120	120	120

The specifications shown are at a room temperature of 25°C. LED is not available separately, it is isolated and requires an external power source.



Tolerances: 0.00 to 30.00: ±0.20mm 30.01 to 80.00: ±0.25mm		Date	Name	<h1>LP 14 CG-deeee-PC</h1>
		03/10	dr	
		<b>knitter-switch</b>		<b>30 20 53</b>
				Page 3/3
Modifications	Date	Name		