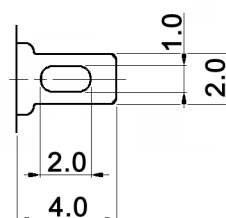


P / N	SWITCH FUNCTION
MPS 103 Dx	ON - ON
TERM. CONN.	3-1 3-2

TERMINAL DETAIL



CIRCUIT DIAGRAM



x	Contacts / terminals	Rating
empty	copper alloy, silver plated over nickel	3A, 125V AC
B	copper alloy, 2µm gold plated over 3µm nickel	min.: 1µA, 20mV DC max.: 25mA, 20V DC

Specifications:

- Contact resistance: 10mOhm max. at 1.5mA, 200µV AC (1kHz)
- Insulation resistance: 1000MOhm min. at 500V DC
- Dielectric strength: 1000V AC for 1 minute
- Electrical life: 25 000 cycles
- Operating force: 4 +/-2N (410 +/-210gf)
- Material:
  - Locating ring: steel, zinc plated
  - Tooth washer: carbon tool steel, zinc plated
  - Hex nut: steel, nickel plated
  - Bushing: brass, nickel plated
  - Plunger: brass, nickel plated
  - Frame: stainless steel
  - Case: diallyl phthalate resin, black



Tolerances: ±0.2mm	Date	Name	<h1>MPS 103 Dx</h1>
	03/11	dr	
			<h2>30 23 37</h2>
			<h3>knitter-switch</h3>
			Page
			1/1
Modifications	Date	Name	