

### CONTACT ARRANGEMENT

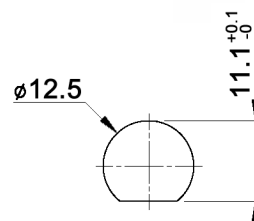
code for x	function	toggle towards flat	toggle opposite to flat
N	On-On	1-2, 4-5	2-3, 5-6
R	Mom-On	1-2, 4-5	2-3, 5-6

code for x	function	toggle towards flat	toggle in center	toggle opposite to flat
P	On-Off-On	1-2, 4-5	open	2-3, 5-6
S	Mom-Off-Mom			
T	Mom-Off-On			
PA	On-On-On	1-2, 4-5	1-2, 5-6	2-3, 5-6
SA	Mom-On-Mom			
TA	Mom-On-On			

### Specifications:

**Contact rating:** 3A, 250V AC / 6A, 125V AC  
 4A, 30V DC / 5A, 12V DC  
 6A, 6V DC  
**Contact resistance:** 20mOhm max.  
**Insulation resistance:** 1 000MOhm min. at 500V DC  
**Dielectric strength:** 1 500V, 50Hz for the duration of 1 minute  
**Operating temperature:** -45°C to +140°C  
**Mechanical life:** min. 100 000 cycles  
**Soldering conditions:** hand-soldering: max.: 420°C, 3sec., 60W  
 auto-soldering: max.: 270°C, 5sec.  
**Mounting instruction:** max. torque: 137Ncm  
**IP rating:** IP67  
**Material:** Terminal / contact: brass, silver plated  
 Case: DAP  
 Housing: stainless steel, CNS9265  
 Bushing: copper alloy, C3604BD nickel plated  
 Actuator: copper alloy, C3604BD chrome plated  
**Included accessories:** 1 pc. nut 15/32-32, nickel plated, 14mm wrench size  
 1 pc. tooth washer  
 1 pc. O-ring, silicone

### PANEL MOUNTING



### Compliance: RohS III (2015/863/EU)

Tolerances:	Date	Name
0.00: ±0.25mm	05/09	dr
0.0: ±0.40mm		

# MTW 206 x

## knitter-switch

# 30 18 23

Page

1/1

Function table	Date	Name
	10/19	dr
Modifications	Date	Name