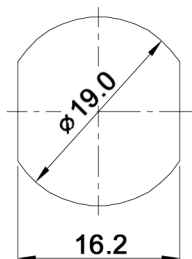


Specifications:

Cotact rating: 2 A, 250 V AC; 4 A, 125 V AC
 Contact resistance: 50 mOhm max.
 Insulation resistance: 500 MOhm min.
 Dielectric strength: 1500 V, 50 Hz for the duration of 1 minute
 Operating temperature: -20°C to +70°C
 Mechanical life: 10 000 steps min.
 Material: Case: zinc alloy, chromium plated
 Contacts / terminals: gold plated
 Key: brass, nickel plated

x	Poles	Key pos.	Step	Key rem. pos.	Connections
A	1	3	45°	I	8-1 / 1-2 / 5-6
D	2	3	45°	III	8-1, 4-5 / 1-2, 5-6 / 2-3, 6-7
G	1	3	45°	II	7-8, 8-1, 1-2
N	1	2	90°	I	8-1 / 1-3
O	2	2	90°	I	8-1, 4-5 / 1-3, 5-7
R	1	2	90°	I, II	8-1 / 1-3
S	2	2	90°	I, II	8-1, 4-5 / 1-3, 5-7

RECOMMENDED HOLE SIZE



Number of keys supplied: 2
 Compliance: RohS III (2015/863/EU)

Tolerances: >0: ±0.1 mm >4: ±0.2 mm >30: ±0.3 mm			Date 11/19	Name dr	MRK 216 x
Function	10/22	dr	knitter-switch		30 43 20
Revised	09/22	dr			
Modifications	Date	Name			