

**CONTACT ARRANGEMENT**

code for x	function	toggle towards keyway	toggle opposite to keyway
D	On-On	1-2, 4-5, 7-8	2-3, 5-6, 8-9
F	Mom-On		

code for x	function	toggle towards keyway	toggle in center	toggle opposite to keyway
E	On-Off-On			
G	Mom-Off-Mom	1-2, 4-5, 7-8	open	2-3, 5-6, 8-9
H	Mom-Off-On			
EA	On-On-On	1-2, 4-5, 7-8	2-3, 4-5, 8-9	2-3, 5-6, 8-9

**Specifications:**

**Contact rating:** 3A, 250V AC / 6A, 125V AC  
 4A, 30V DC / 5A, 12V DC  
 6A, 6V DC

**Contact resistance:** 20mOhm max.

**Insulation resistance:** 1 000MOhm min. at 500V DC

**Dielectric strength:** 1 500V, 50Hz for the duration of 1 minute

**Operating temperature:** -45°C to +140°C

**Mechanical life:** min. 200 000 cycles

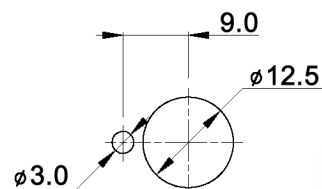
**Soldering conditions:** hand-soldering: max.: 420°C, 3sec., 60W  
 auto-soldering: max.: 270°C, 5sec.

**Mounting instruction:** max. torque: 137Ncm

**Material:** Terminal / contact: brass, silver plated  
 Case: DAP  
 Housing: stainless steel, CNS9265  
 Bushing: copper alloy, C3604BD nickel plated  
 Actuator: copper alloy, C3604BD chrome plated

**Included accessories:** 2 pcs. nut 15/32-32, nickel plated, 14mm wrench size  
 1 pc. tooth washer  
 1 pc. locking washer

**PANEL MOUNTING**



Tolerances: 0.00: ±0.25mm 0.0: ±0.40mm	Date	Name
	04/09	dr

**MTG 306 x**

**knitter-switch**

**30 18 03**

Page  
1/1

Modifications	Date	Name
---------------	------	------