

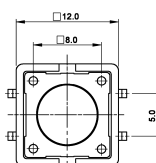
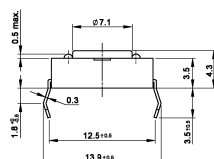
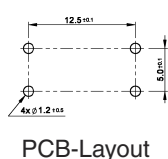


Specifications:

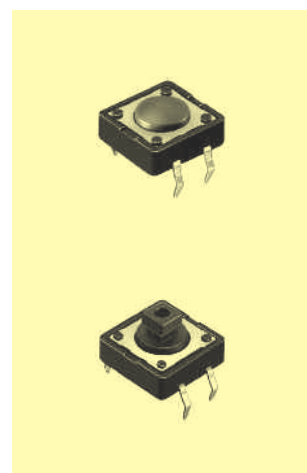
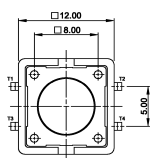
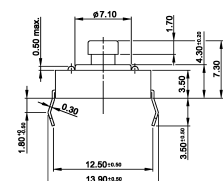
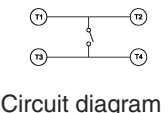
Contact rating:	12 V DC, 50 mA
Contact resistance:	< 100 mΩ
Insulation resistance:	> 100 MΩ at 500 V DC
Dielectric strength:	250 V, 50 Hz for the duration of 1 minute
Operating temperature:	-25 °C to +70 °C
Electrical life:	2.6 N: minimum 100 000 cycles 1.6 N: minimum 200 000 cycles
Operating force:	see ordering code
Contacts:	phosphor bronze, silver-plated
Terminals:	PC terminals, brass, silver-plated
Material:	cover: stainless steel base and stem: nylon meets UL 94 V-0
Mounting:	on pc-board
Soldering conditions:	hand-soldering – max.: 30 W, 2 sec, 320 °C wave-soldering – max.: 5 sec, 260 °C subject to PCB 1.6 mm thickness
Travel:	0.35 mm ± 0.1 mm

Models:

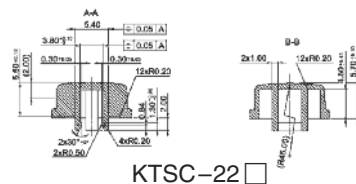
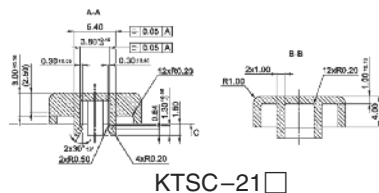
TS 21 □



TS 24 □



Caps for TS 24 □



Ordering code:

Switches TS 2 □ □

- Dimension:
- 1 4.3 mm
 - 4 7.3 mm

- Colour of stem for operating force:
- N 1.6 N, brown
 - R 2.6 N, red

Caps KTSC-2 □ □

- Cap type:
- 1 square
 - 2 round

- Cap colour:
- Y yellow
 - B blue
 - R red
 - I ivory
 - K black
 - G green