



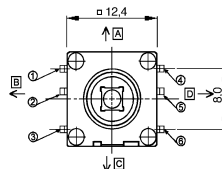
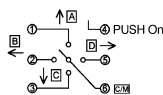
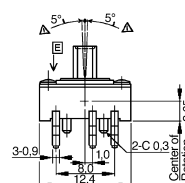
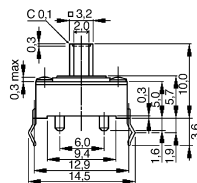
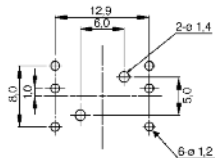
# Multi-Function Tact Switches

## Specification:

Contact rating:	15 V DC, 20 mA
Contact resistance:	< 100 mΩ
Insulation resistance:	> 100 MΩ
Dielectric strength:	100 V, 50 Hz for the duration of 1 minute
Operating temperature:	-25 °C to +70 °C
Mechanical life:	minimum 50 000 cycles per direction
Contacts:	phosphor bronze silver-plated
Mounting:	TSJ 31: on pc-board TSSJ 30: on pc-board – SMD
Soldering conditions:	TSJ 31: auto-soldering: 255 °C, 5 sec max. TSSJ 30: reflow-soldering: 245 °C, 2.5 sec max.
Packing:	300 pcs/tray

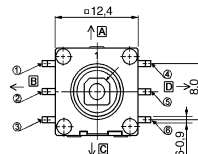
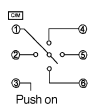
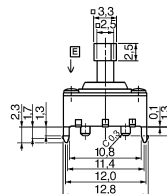
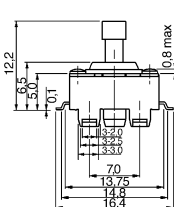
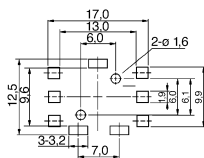
## Models:

TSJ 31



Direction	Connection
A	1 - 6
B	2 - 6
C	3 - 6
D	5 - 6
E (push)	4 - 6

TSSJ 30



Direction	Connection
A	1 = 4
B	1 = 2
C	1 = 6
D	1 = 5
E (push)	1 = 3

