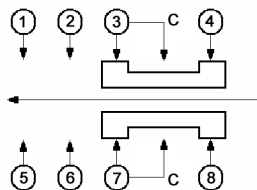
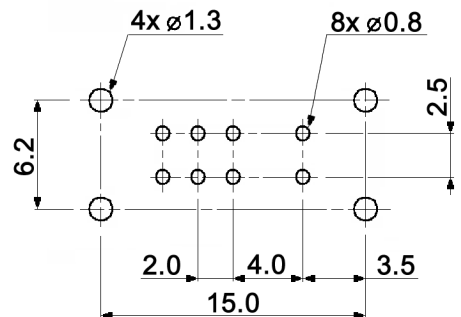


CIRCUIT DIAGRAM
C: COMMON PIN
BOTTOM VIEW



HOLE LAYOUT $\oplus 0.05$



Specifications:

- Contact rating: 0.2A, 30V DC
- Contact resistance: 20mOhm max.
- Insulation resistance: 100MOhm min. at 500V DC for 1 minute
- Dielectric strength: 500V AC for 1 minute (50/60Hz, 2mA)
- Operating temperature: -10°C to +60°C
- Mechanical life: 10 000 cycles
- Operating force: a-b c-b: 200gf +/-100gf
b-a b-c: 250gf +/-150gf
- Soldering conditions: 260 +/-5°C; 5 +/-1.0sec.
- Material: Slider: POM, black
Frame: SPCC, nickel plated
Spring: SWC, temper
Steel ball: carbon steel, natural
Contact clip: C5210, silver plated
Base: phenolic resin, natural
Terminal: brass strip, silver plated

Compliance: RohS III (2015/863/EU)

Tolerances: up to 10: ±0.2mm above 10-50: ±0.3mm	Date	Name
	07/05	dr
Revised	09/14	dr
Material	07/07	dr
Soldering conditions	01/06	dr
Modifications	Date	Name

MFP 223 P

knitter-switch

30 06 51

Page

1/1