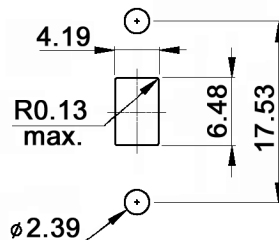


ACTUATOR SHOWN IN POS. 1

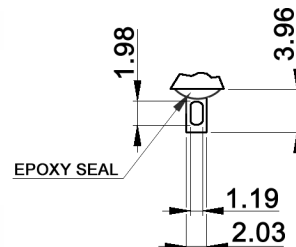
SWITCH FUNCTION

| Model No. | POS. 1 | POS. 2 |
|-------------|--------|--------|
| | | |
| MFS 106 D | ON | ON |
| Term. Conn. | 2-1 | 2-3 |

PANEL MOUNTING



SOLDER LUG



Specifications:

- Contact rating: 2 A, 250 V AC; 5 A, 120 V AC or 28 V DC
- Contact resistance: 10 mOhm max. at 2-4 V DC
- Insulation resistance: 1000 MOhm min.
- Dielectric strength: 1000 V rms min.
- Operating temperature: -40°C to +85°C
- Mechanical life: 30 000 make-and-break cycles
- Operating force: 350 +/-100 gf
- Material: Case: diallyl phthalate (DAP) (UL94V-0), black
Actuator: nylon, black
Housing: stainless steel
Contact / terminals: copper alloy, silver plated

Compliance: RohS II (2011/65/EU)

| | | | |
|---|-------|------|--------------------|
| Tolerances: 0.00: ±0.25mm 0.0: ±0.40mm | Date | Name | <h1>MFS 106 D</h1> |
| | 03/18 | dr | |
| | | | <h2>30 40 22</h2> |
| | | | |
| | | | Page |
| | | | 1/1 |
| Modifications | Date | Name | |

knitter-switch