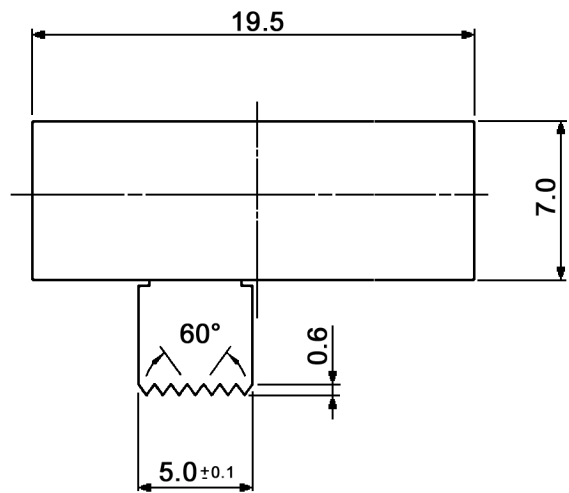
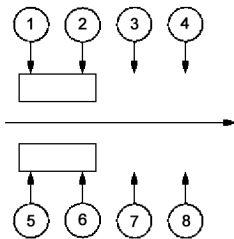


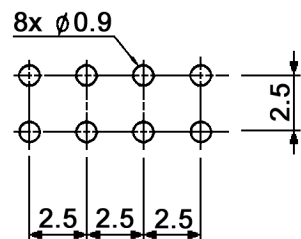
CIRCUIT DIAGRAM  
C: COMMON PIN



Specifications:

- Contact rating: 0.3A, 30V; 2A, 5V
- Contact resistance: 20mOhm max.
- Insulation resistance: 100MOhm min. at 500V DC for 1 minute
- Dielectric strength: 500V AC for 1 minute (50 / 60Hz, 2mA)
- Operating temperature: -20°C to +85°C
- Storage temperature: -40°C to +85°C
- Mechanical life: 10 000 cycles
- Operating force: a-b c-b: 200 +/-100gf  
b-a b-c: 300 +/-150gf
- Soldering conditions: manual soldering: max. 360°C, max. 4sec.
- Material: Terminal: brass strip, silver plated  
Frame: SPCC, zinc plated  
Base: phenolic resin, natural  
Contact clip: C5210, silver plated  
Steel ball: carbon steel, natural  
Spring: SWC, temper  
Slider: PBT, black

HOLE LAYOUT  $\pm 0.05$   
TOP VIEW



Compliance: RohS III (2015/863/EU)

Tolerances: up to 10: ±0.2mm above 10-50: ±0.3mm	Date	Name
	12/16	dr
Storage temperature	11/19	dr
Modifications	Date	Name

**MFP 2320 R**

**30 37 36**

**knitter-switch**

Page

1/1