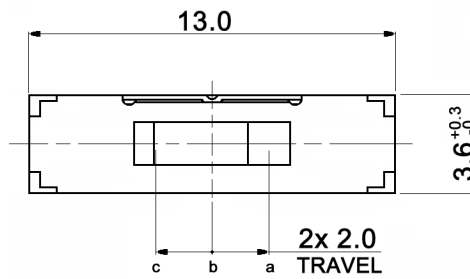
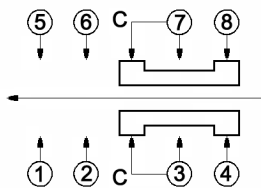


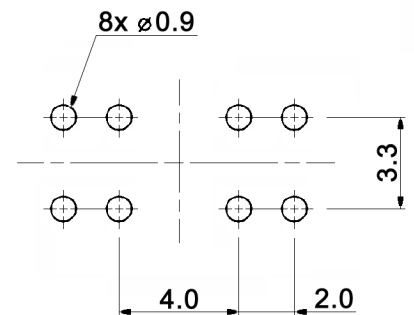
Terminal No. ①



CIRCUIT DIAGRAM
C: COMMON PIN



HOLE LAYOUT
TOP VIEW $\oplus 0.05$



Specifications:

- Contact rating:** 0.3A, 12V DC
- Contact resistance:** 50mOhm max.
- Insulation resistance:** 100MOhm min. at 500V DC for 1 minute
- Dielectric strength:** 500V AC (50/60Hz, 2mA) for 1 minute
- Operating temperature:** -10°C to +60°C
- Mechanical life:** 5 000 cycles
- Operating force:** a-b c-b: 200 +/-100gf
b-a b-c: 300 +/-150gf
- Soldering conditions:** 260 +/-5°C, 5 +/-1sec.
- Timing:** non-shorting
- Material:** Terminal: brass strip, silver plated
Cover: stainless steel, washing
Slider: nylon, blue
Contact plate: SUS, silver plated
Case: nylon, black

Compliance: RohS III (2015/863/EU)

Tolerances: up to 10: ±0.2mm above 10-50: ±0.3mm	Date	Name
	12/09	dr
Specifications	08/20	dr
Modifications	Date	Name

MMP 238

30 19 82

Page

1/1

knitter-switch