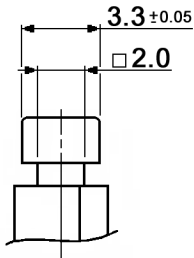
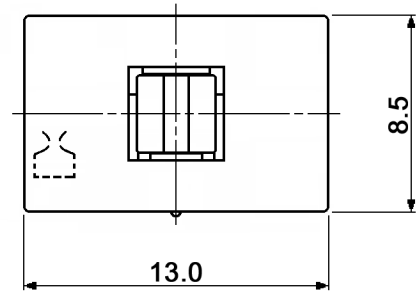
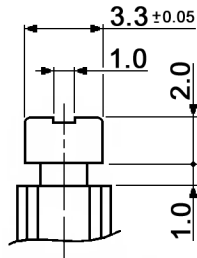


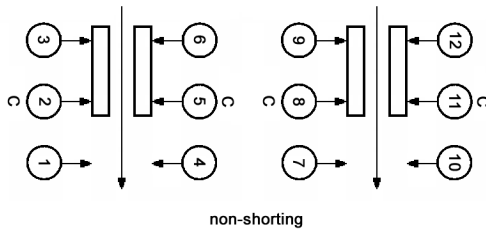
DETAIL A



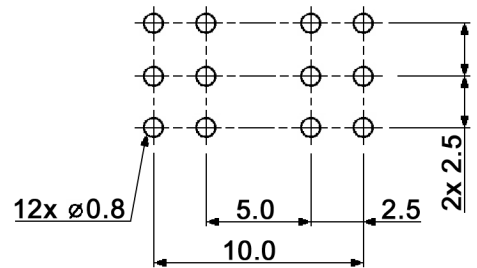
DETAIL B



CIRCUIT DIAGRAM
C: COMMON PIN



HOLE LAYOUT
TOP VIEW ± 0.05



Compliance: RohS II (2011/65/EU)

Tolerances:	Date	Name
up to 10: ±0.2mm	08/02	us
above 10-50: ±0.3mm		
Rename	01/15	dr
General tolerances	05/14	dr
Revised	12/09	dr
Modifications	Date	Name

MPSA 42E06x-O

knitter-switch

30 03 22

Page

1/2

Specifications:

Contact rating: 0.1A, 30V DC
 Contact resistance: 30mOhm
 Insulation resistance: 100MOhm
 Dielectric strength: 500V AC (50/60Hz, 2mA) for 1 minute
 Operating temperature: -10°C to +60°C
 Mechanical life: 10 000 cycles
 Operating force: 350 +/-100gf
 Soldering conditions: 260 +/-5°C, 5 +/-1sec.
 Material: Terminal: brass strip, silver plated
 Contact clip: PBS, silver plated
 Spring: SWC, temper
 Housing: POM, black
 Case: nylon, black
 Push: POM, white

x	Switching function
empty	on - (on), momentary
L	on - on, latching

Compliance: RohS II (2011/65/EU)

Tolerances: up to 10: ±0.2mm above 10-50: ±0.3mm		Date	Name	<h1>MPSA 42E06x-O</h1>
		08/02	us	
			knitter-switch	<h2>30 03 22</h2>
Modifications			Date	Name