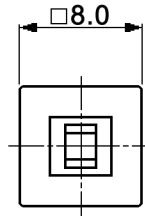
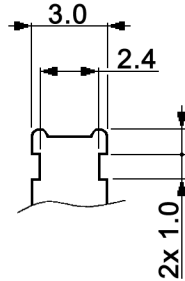
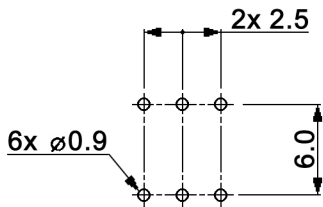


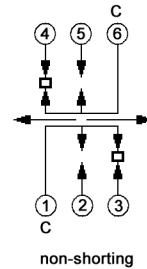
DETAIL A



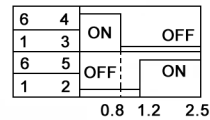
HOLE LAYOUT TOP VIEW  $\pm 0.05$



CIRCUIT DIAGRAM  
C: COMMON PIN



TIME LAG DIAGRAM



for momentary only

Compliance: RohS II (2011/65/EU)

Tolerances: up to 10: $\pm 0.20\text{mm}$ above 10-50: $\pm 0.30\text{mm}$		Date	Name
		01/06	dr
Table "y"	01/15	dr	
Revised	11/13	dr	
Specifications	10/13	dr	
Gold plating	05/12	dr	
Rename	04/12	dr	
Revised	02/12	dr	
Revised	09/11	dr	
Modifications	Date	Name	

**MP22E08x-O-y-z**

**knitter-switch**

**30 07 54**

Page

1/2

Specifications:

Contact rating: 0.1A, 30V DC  
 Contact resistance: 70mOhm max., after life cycle and humidity test 150mOhm max.  
 Insulation resistance: 100MOhm min., after life cycle test min. 10MOhm  
 Dielectric strength: 500V AC for 1 minute  
 Operating temperature: -10°C to +60°C  
 Mechanical life: 10 000 cycles  
 Soldering conditions: 260 +/-5°C, 5 +/-1sec; manual or dip-soldering only, no pre-heat  
 Material: Spring: SWC, temper  
 Case: PBT, black  
 Housing: POM, white/black  
 Stem: POM, white  
 Contact plate: C1720  
 Terminals: brass

x	Switching function	y	Operating force (gf)	Remark
empty	on - (on), momentary	060	60 +/-25	for momentary only
L	on - on, latching	150	150 +/-50	for momentary only
		empty	180 +/-80	for latching only
		350	350 +/-100	for latching only
		500	500 +/-100	for momentary only
		z	Contact / terminal surface	
		(empty)	silver plated over nickel	
		AU3	0.075µm gold plated over nickel	

Compliance: RohS II (2011/65/EU)

Tolerances: up to 10: ±0.20mm above 10-50: ±0.30mm		Date	Name	<h1>MPSA 22E08x-O-y-z</h1>
		01/06	dr	
		<b>knitter-switch</b>		<h2>30 07 54</h2>
				Page
				2/2
Modifications	Date	Name		