

CONTACT ARRANGEMENT

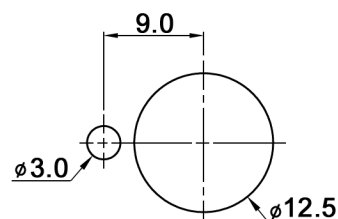
code for x	function	connected terminals
D	ON - ON	1-2, 4-5, 7-8 alternating with 2-3, 5-6, 8-9
F	ON - MOM	rest position: 1-2, 4-5, 7-8; pushed down: 2-3, 5-6, 8-9

RATING

y	contacts	all other conductive parts	rating DC	rating AC
empty	Ag (solid)	Brass, 10 µm Ag over 1.5 µm Ni	6V / 6 A 12V / 5 A 30 V / 4 A	125 V / 6 A 250 V / 3 A
B	Brass, 2 µm Au over 3 µm Ni	Brass, 2 µm Au over 3 µm Ni	max. 0.4 VA, max. 20 V AC/DC	
G	Ag (solid), 2 µm Au over 3 µm Ni	Brass, 2 µm Au over 3 µm Ni	6V / 6 A 12V / 5 A 30 V / 4 A 150 V / 10 mA	125 V / 6 A 250 V / 3 A

Min. rating for silver contacts: 10mA, 5V AC/DC
 Min. rating for gold plated contacts: 1µA, 20mV AC/DC

PANEL MOUNTING



Specifications

Contact resistance: 20mOhm max.
 Insulation resistance: 1000MOhm min. at 500V DC
 Dielectric strength: 1500V RMS
 Operating temperature: -30°C to +85°C
 Mechanical life: 30 000 make-and-break cycles
 Material: Case: DAP
 Housing: steel, nickel plated
 Bushing: copper alloy, C3604BD, nickel plated
 Plunger: copper alloy, C3604BD, chrome plated
 Included accessories: 2 pcs. nut 15/32-32, nickel plated, 14mm wrench size
 1 pc. tooth washer
 1 pc. locking washer

Compliance: RohS III (2015/863/EU)

Tolerances: 0.00: ±0.25mm 0.0: ±0.40mm	Date	Name	<h1>MPG 306 x y</h1>
	03/13	dr	
Material	11/21	dr	<h1>30 28 24</h1>
Contact arrangement	07/15	dr	
Modifications	Date	Name	Page
			1/1