

### CONTACT ARRANGEMENT

| code for x | function | connected terminals                                      |
|------------|----------|--|
| D          | ON - ON  | 1-2, 4-5, 7-8 alternating with 2-3, 5-6, 8-9             |
| F          | ON - MOM | rest position: 1-2, 4-5, 7-8; pushed down: 2-3, 5-6, 8-9 |

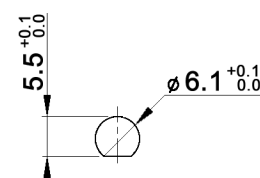
### RATING

| y     | contacts                         | all other conductive parts     | rating DC  | rating AC                  |
|-------|----------------------------------|--------------------------------|--|----------------------------|
| empty | Ag (solid)                       | Brass, 10 µm Ag over 1.5 µm Ni | 6V / 6 A<br>12V / 5 A<br>30 V / 4 A                  | 125 V / 6 A<br>250 V / 3 A |
| B     | Brass, 2 µm Au over 3 µm Ni      | Brass, 2 µm Au over 3 µm Ni    | max. 0.4 VA, max. 20 V AC/DC                         |                            |
| G     | Ag (solid), 2 µm Au over 3 µm Ni | Brass, 2 µm Au over 3 µm Ni    | 6V / 6 A<br>12V / 5 A<br>30 V / 4 A<br>150 V / 10 mA | 125 V / 6 A<br>250 V / 3 A |

### Specifications:

Contact resistance: 20mOhm max.  
 Insulation resistance: 1 000MOhm min. at 500V DC  
 Dielectric strength: 1 500V, 50Hz for the duration of 1 minute  
 Operating temperature: -45°C to +140°C  
 Mechanical life: min. 30 000 cycles  
 Soldering conditions: hand-soldering: max.: 420°C, 3sec., 60W  
 auto-soldering: max.: 270°C, 5sec.  
 Mounting instruction: max. torque: 49Ncm  
 IP rating: IP67  
 Material: Case: DAP  
 Housing: steel, nickel plated  
 Bushing: copper alloy, C3604BD nickel plated  
 Actuator: copper alloy, C3604BD chrome plated  
 Included accessories: 1 pc. nut M6x0.75, nickel plated, 9mm wrench size  
 1 pc. tooth washer  
 1 pc. O-ring, silicone

### PANEL MOUNTING



### Compliance: RohS III (2015/863/EU)

|   |       |      |                       |
|---|-------|------|-----------------------|
| Tolerances: 0.00: ±0.25mm<br>0.0: ±0.40mm | Date  | Name | <h1>MPE 306 xy</h1>   |
|   | 07/09 | dr   |                       |
|   |       |      |                       |
|   |       |      |                       |
| Revised                                   | 01/22 | dr   | <h1>30 18 81</h1>     |
| Contact arrangement                       | 07/15 | dr   |                       |
| Dimension                                 | 01/11 | dr   |                       |
| Modifications                             | Date  | Name | <b>knitter-switch</b> |
|   |       |      | Page<br>1/1           |