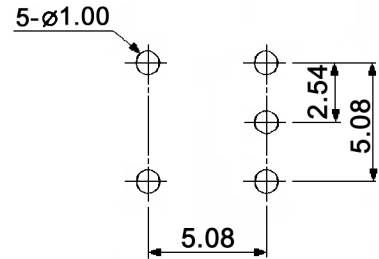
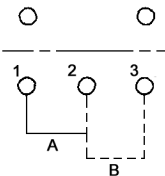


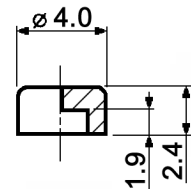
P.C. LAYOUT



CIRCUIT DIAGRAM  
(BOTTOM VIEW)



Plastic caps:



- black KF 4105
- grey KF 4107
- red KF 4109
- white KF 4110

Specifications:

- Contact rating: max.: 0.4VA, 28V DC  
min.: 1µA, 20mV DC
- Contact resistance: 100mOhm max.
- Insulation resistance: 500MOhm min. at 250V DC
- Operating temperature: -40°C to +85°C
- Storage temperature: -40°C to +85°C
- Mechanical life: min. 30 000 cycles
- Soldering conditions: auto-soldering: max.: 250 +/-5°C, 7sec.  
max.: 270 +/-5°C, 5sec.

- Mounting: on pc-board
- ESD resistance: 8kV min. (between actuator and terminals)
- Switching function: on - mom

Washable by water or alcohol-based cleaners

- Material: Contacts: phosphor bronze, gold plated  
Terminals: PC terminals, crimped, phosphor bronze, gold plated  
Case / actuator: PES, UL94V-0, washable

Compliance: RohS II (2011/65/EU)

Tolerances: up to 10: ±0.2mm above 10-50: ±0.3mm	Date	Name
	01/09	dr
Washable	07/14	dr
Circuit diagram	11/11	dr
Temperatures	04/11	dr
Modifications	Date	Name

**FP 1 F-RA**

**knitter-switch**

**20 25 70**

Page

1/1