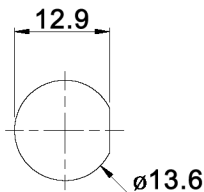


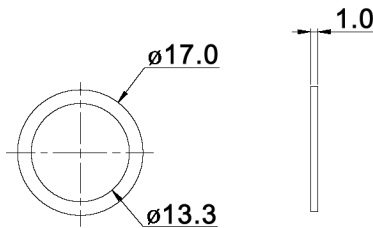
SWITCH FUNCTION

Model No.	POS. 1	POS. 2
	DPW 1 BG	ON
Term. Conn.	1	short
Schematic	3	open

PANEL CUT-OUT



RUBBER WASHER



X=CAP COLOR	
W	white
K	black
R	red
O	orange
Y	yellow
G	green
B	blue

Specifications:

- Contact rating: 400mA, 32V AC max.; 100mA, 50V DC max.; 125mA, 125V AC max.
- Contact resistance: 50mOhm max. at 2-4V DC, 100mA
- Insulation resistance: 1GOhm min. at 500V DC
- Dielectric strength: 1000V AC (50/60Hz) for 1 minute
- Operating temperature: -30°C to +85°C
- Mechanical life: 1 000 000 cycles
- Electrical life: 500 000 cycles
- Operating force: 2-5N
- Soldering conditions: 350°C max. for 5sec.
- Travel: 1.5 +/-0.25mm
- Water proofing: IP 67
- Torque: 1.5Nm max. applied to nut
- Panel thickness: min. 0.8 - max. 1.8mm
- Material: Case: diallyl phthalate (DAP) (UL94V-0)
Cap / bushing: polyamide 6/6
Terminal / contact: gold over silver plated



Tolerances: 0.00: ±0.25mm 0.0: ±0.40mm	Date	Name	DPW 1 BG S-x
	11/11	dr	
			30 24 85
			knitter-switch
			30 24 85
Modifications	Date	Name	Page 1/1