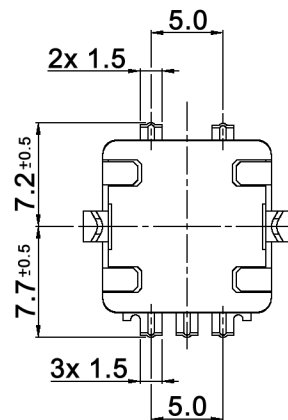
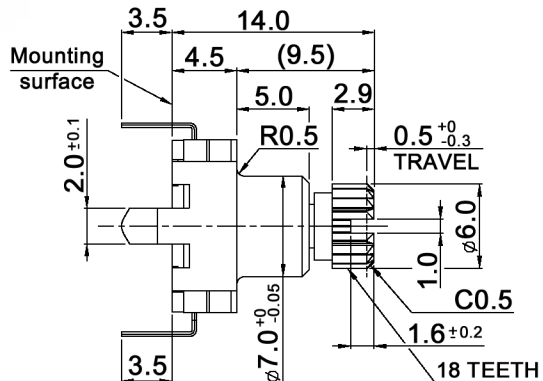
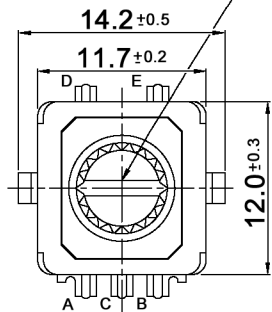
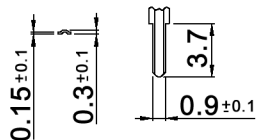


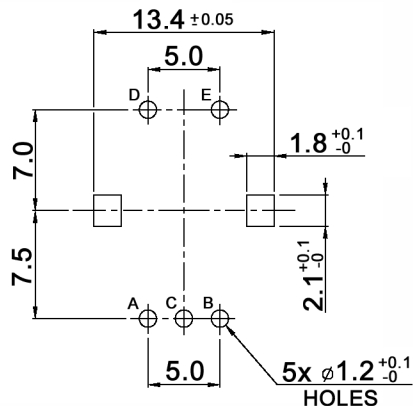
Shaft flat is optional angle



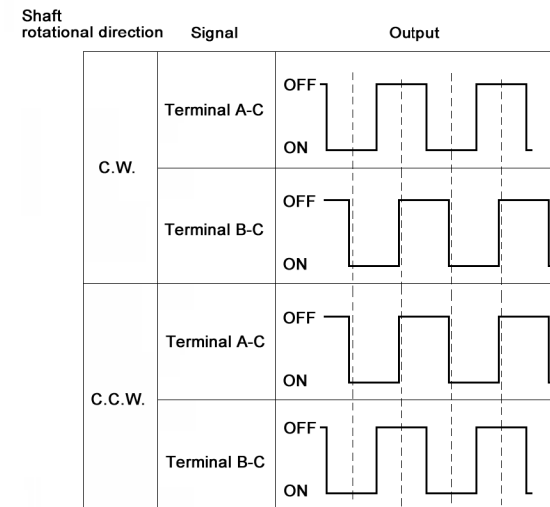
TERMINAL DETAIL



P.C.B. MOUNTING DETAIL
(TOLERANCE ±0.1)
VIEWED FROM MOUNTING SIDE
t=1.6mm



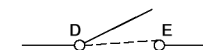
OUTPUT SIGNAL FORMAT



Specifications:

- Contact rating: 10mA, 5V DC
- Contact resistance: 100mOhm max.
- Insulation resistance: 100MOhm min. at 250V DC
- Dielectric strength: 300V AC for 1 minute
- Operating temperature: -40°C to +85°C
- Storage temperature: -40°C to +85°C
- Resolution: 15 pulses / 360° for each phase
- Detent torque: 100 +/-70gf.cm
- No. and pos. of detents: 30 detents; step angle: 12 +/-3°
- Rotational life: 15 000 cycles
- Soldering conditions: 260 +/-5°C, 5 +/-1sec.
- Switch: Switch rating: 10mA, 5V DC
Mechanical life: 20 000 cycles
Operating force: 350 +/-100gf

CIRCUIT DIAGRAM



Compliance: RohS II (2011/65/EU)

Tolerances: ≤10: ±0.3mm 10-100: ±0.5mm	Date 08/17	Name dr	MERLP11-15295
knitter-switch			30 39 33
Modifications	Date	Name	Page 1/1