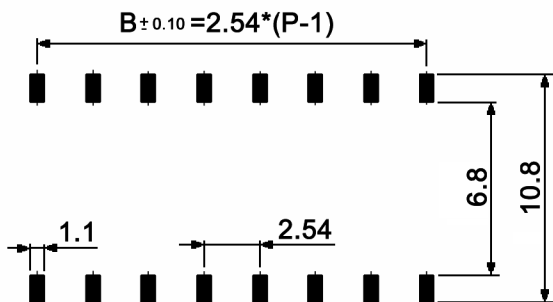
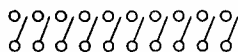


P.C.B. LAYOUT



SCHEMATIC (TYP.)



(1,2,3,4,5,6,7,8,9,10,12, POS AVAIL)

Prod. No.	No. of pos.	A	B
SBS 5001 TG	1	2.44	-
SBS 5002 TG	2	4.98	2.54
SBS 5003 TG	3	7.52	5.08
SBS 5004 TG	4	10.06	7.62
SBS 5005 TG	5	12.60	10.16
SBS 5006 TG	6	15.14	12.70
SBS 5007 TG	7	17.68	15.24
SBS 5008 TG	8	20.22	17.78
SBS 5009 TG	9	22.76	20.32
SBS 5010 TG	10	25.30	22.86
SBS 5012 TG	12	30.38	27.94

Compliance: RohS III (2015/863/EU)

Tolerances: max. ±0.2mm		Date	Name	<h1>SBS 50xx TG</h1>
		07/10	dr	
Packaging	10/23	dr		
Material	10/16	dr		
Sealing	11/13	dr		<h2>30 21 46</h2>
Soldering conditions	03/13	dr	knitter-switch	
Specifications	05/11	dr		
Modifications	Date	Name		1/3

Specifications:

Contact rating: non-switching: 100mA, 50V DC
switching: 25mA, 24V DC
min.: 20mV AC/DC at 1µA

Contact resistance: 100mOhm max.

Insulation resistance: 100MOhm min. at 500V DC for 1 minute +/-5sec.

Dielectric strength: 500V AC (50/60Hz) for 1 minute

Shock resistance: MIL STD 202F, method 213B, cond. A,
contact interruption <10µsec.

Vibration resistance: MIL STD 202F, method 204, cond. C,
contact interruption <10µsec.

Operating temperature: -40°C to +85°C

Storage temperature: -40°C to +85°C

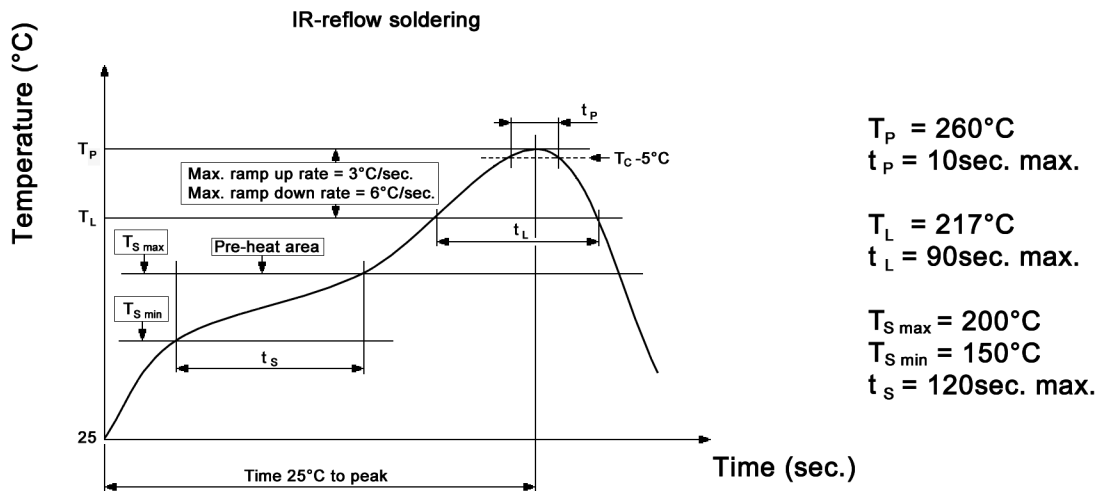
Mechanical life: 5 000 cycles

Operating force: 1 000gf max.

Sealing: by protective tape, washable by aqueous detergents and isopropyl alcohol

Material: Cover / base: high-temp. thermoplastic PA-9T UL94V-0, molded black,
Genestar GN2332, UL-file E90350
Contact: copper, 0.3µm gold plated over 0.5µm nickel
Terminal: brass, 0.3µm gold plated over 0.5µm nickel
Actuator: thermoplastic LCP UL94V-0, molded white,
Sumitomo E6006L, UL-file E54705
Tape: kapton

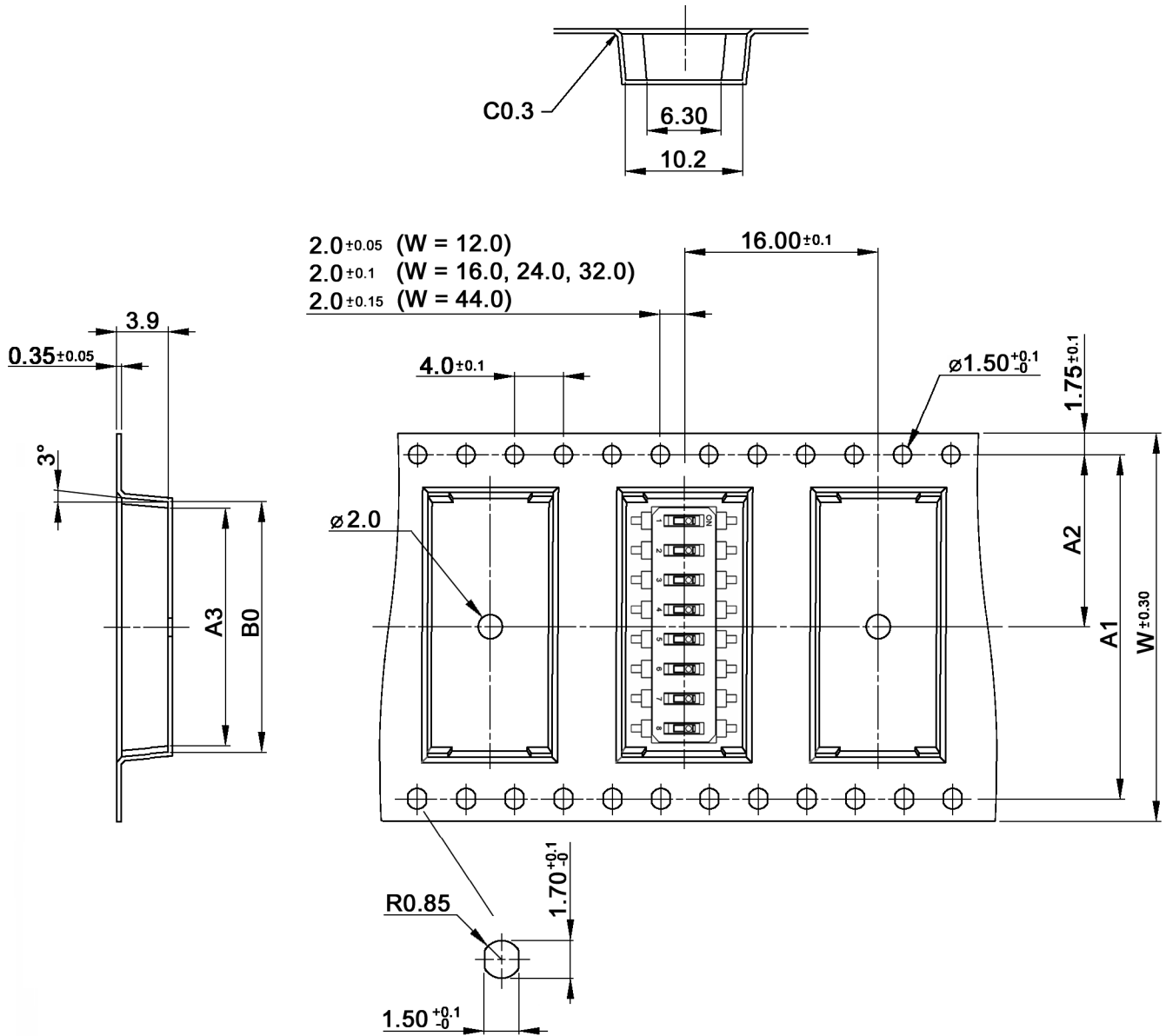
Soldering conditions:



Compliance: RohS III (2015/863/EU)

Tolerances: max. ±0.2mm		Date	Name	SBS 50xx TG
		07/10	dr	
Packaging	10/23	dr		
Material	10/16	dr		
Sealing	11/13	dr		30 21 46
Soldering conditions	03/13	dr	knitter-switch	
Specifications	05/11	dr		
Modifications	Date	Name		2/3

Packaging:



2.0 ± 0.05 (W = 12.0)
 2.0 ± 0.1 (W = 16.0, 24.0, 32.0)
 2.0 ± 0.15 (W = 44.0)

xx	A1	A2	A3	B0	W
01	-	5.50 ± 0.05	2.05	2.75	12.0
02	-	7.50 ± 0.1	4.40	5.30	16.0
03	-	7.50 ± 0.1	6.95	7.85	16.0
04	-	11.50 ± 0.1	9.60	10.56	24.0
05	-	11.50 ± 0.1	12.2	13.10	24.0
06	-	11.50 ± 0.1	14.7	15.60	24.0
07	28.40	14.20 ± 0.1	17.28	18.18	32.0
08	28.40	14.20 ± 0.1	19.8	20.70	32.0
09	40.40	20.20 ± 0.15	22.36	23.26	44.0
10	40.40	20.20 ± 0.15	24.9	25.80	44.0
12	40.40	20.20 ± 0.15	29.98	30.88	44.0

Packaging unit: 900 pcs. / reel
 Compliance: RohS III (2015/863/EU)

Tolerances: max. ± 0.2 mm			Date	Name
			07/10	dr
Packaging	10/23	dr		
Material	10/16	dr		
Sealing	11/13	dr		
Soldering conditions	03/13	dr		
Specifications	05/11	dr		
Modifications	Date	Name		

SBS 50xx TG

knitter-switch

30 21 46

Page

3/3