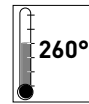


Dual-in-line Switches end-stackable



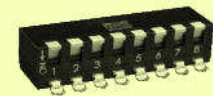
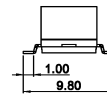
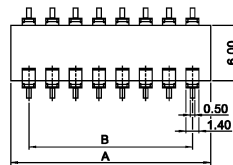
Specifications:

Contact rating:	24 V DC, 25 mA / non-switching: 100 mA, 50 V DC
Contact resistance:	< 100 mΩ
Insulation resistance:	> 100 MΩ
Dielectric strength:	100 V AC (50 Hz or 60 Hz) for 1 minute
Operating temperature:	-40 °C to +85 °C
Mechanical life:	minimum 2 000 operations per pole
Material:	cover/base: high-temp. PA-9T UL 94 V-0, black; actuator: LCP UL 94 V-0, white
Contact:	copper; gold-plated at contact area
Terminal:	brass, gold-plated
Construction:	case sealed
Mounting:	on pc-board – SMD
Slide position:	OFF

Models:

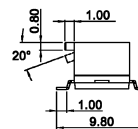
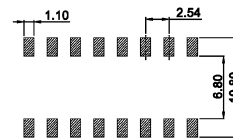
Series SBP 8000 T

Type	Poles	Length (A)
SBP 8002 T	2	6.48 mm
SBP 8004 T	4	11.56 mm
SBP 8006 T	6	16.64 mm
SBP 8008 T	8	21.72 mm
SBP 8010 T	10	26.80 mm



Series SBP 8100

Type	Poles	Length (A)
SBP 8102 T	2	6.48 mm
SBP 8104 T	4	11.56 mm
SBP 8106 T	6	16.64 mm
SBP 8108 T	8	21.72 mm
SBP 8110 T	10	26,80 mm



Packing: on tapes

Type	Tape	Reel	Tape width (A)
SBP 8002 T	700 pieces;	Ø 300 mm	16.0 mm
SBP 8004 T	700 pieces;	Ø 300 mm	24.0 mm
SBP 8006 T	700 pieces;	Ø 300 mm	24.0 mm
SBP 8008 T	700 pieces;	Ø 300 mm	32.0 mm
SBP 8010 T	700 pieces;	Ø 300 mm	44.0 mm
SBP 8102 T	700 pieces;	Ø 300 mm	16.0 mm
SBP 8104 T	700 pieces;	Ø 300 mm	24.0 mm
SBP 8106 T	700 pieces;	Ø 300 mm	24.0 mm
SBP 8108 T	700 pieces;	Ø 300 mm	32.0 mm
SBP 8110 T	700 pieces;	Ø 300 mm	44.0 mm