

PRODUCT SPECIFICATION

3.6" TFT LCD MODULE MODEL: YDP LCD I R 360 SR



< ◇ > Preliminary Specification

< ◆ > Finally Specification

CUSTOMER'S APPROVAL	
CUSTOMER :	
SIGNATURE:	DATE:

APPROVED BY	PM REVIEWED	PD REVIEWED	PREPARED BY
<div>TFT S. G. H 20220919</div>	_____	_____	<div>TFT L. Q 20220919</div>

knitter-switch

Revision History

Revision	Date	Originator	Detail	Remarks
1.0	2022.09.19	LQ	Initial Release	

Table of Contents

No.	Item	Page
1.	General Description	4
2.	Module Parameter	4
3.	Absolute Maximum Ratings	4
4.	DC Characteristics	5
5.	Backlight Characteristic	5
5.1.	Backlight Characteristics	5
5.2.	Backlighting circuit	5
6.	Optical Characteristics	6
6.1.	Optical Characteristics	6
6.2.	Definition of Response Time	6
6.3.	Definition of Contrast Ratio	7
6.4.	Definition of Viewing Angles	7
6.5.	Definition of Color Appearance	8
6.6.	Definition of Surface Luminance, Uniformity and Transmittance	8
7.	Block Diagram and Power Supply	9
8.	Interface Pins Definition	10
9.	AC Characteristics	12
9.1.	Timing for 3-wire SPI Interface	12
9.2.	Timing for RGB Interface	12
9.3.	Power ON Sequence	14
9.4.	Power OFF Sequence	14
10.	Quality Assurance	15
10.1.	Purpose	15
10.2.	Standard for Quality Test	15
10.3.	Nonconforming Analysis & Disposition	15
10.4.	Agreement Items	15
10.5.	Standard of the Product Visual Inspection	15
10.6.	Inspection Specification	16
10.7.	Classification of Defects	20
10.8.	Identification/marketing criteria	20
10.9.	Packing	20
11.	Reliability Specification	21
12.	Precautions and Warranty	22
12.1.	Safety	22
12.2.	Handling	22
12.3.	Storage	22
12.4.	Metal Pin (Apply to Products with Metal Pins)	22
12.5.	Operation	23
12.6.	Static Electricity	23
12.7.	Limited Warranty	23
13.	Packaging	24
14.	Outline Drawing	25

1. General Description

The specification is a transmissive type color active matrix liquid crystal display (LCD) which uses amorphous thin film transistor (TFT) as switching devices. This product is composed of a TFT-LCD panel, driver ICs and a backlight unit.

2. Module Parameter

Features	Details	Unit
Display Size(Diagonal)	3.6"	
LCD type	IPS TFT	
Display Mode	Transmissive /Normally black	
Resolution	544 RGB x 506	Pixels
View Direction	FULL Viewing	
Module Outline	95.36(H) x 91.66(V) x 2.21(T) (Note1)	mm
Active Area	89.76(H) x 83.49(V)	mm
Pixel Size	165(H) x 165(V)	um
Pixel Arrangement	RGB vertical stripe	
Display Colors	16.7M	
Interface	24-bit RGB Interface+3 wire SPI	
Driver IC	ST72566	-
With or Without Touch Panel	Without	
Operating Temperature	-20~70	°C
Storage Temperature	-30~80	°C
Weight	33	g

Note 1: Exclusive hooks, posts, FFC/FPC tail etc.

3. Absolute Maximum Ratings

GND=0V, Ta=25°C

Item	Symbol	Min.	Max.	Unit
Supply Voltage	VDD	-0.3	4.0	V
Storage temperature	T _{stg}	-30	+80	°C
Operating temperature	T _{op}	-20	+70	°C

Note 1: If Ta below 50°C, the maximal humidity is 90%RH, if Ta over 50°C, absolute humidity should be less than 60%RH.

Note 2: The response time will be extremely slow when the operating temperature is around -10°C, and the back ground will become darker at high temperature operating.

4. DC Characteristics

Item	Symbol	Min.	Typ.	Max.	Unit
Supply Voltage	VDD	3.0	3.3	3.6	V
Logic Low input voltage	V _{IL}	GND	-	0.3*VDD	V
Logic High input voltage	V _{IH}	0.7*VDD	-	VDD	V
Logic Low output voltage	V _{OL}	GND	-	GND+0.4	V
Logic High output voltage	V _{OH}	VDD-0.4	-	VDD	V
Current Consumption All White	I _{VDD}	-	55	-	mA

5. Backlight Characteristic

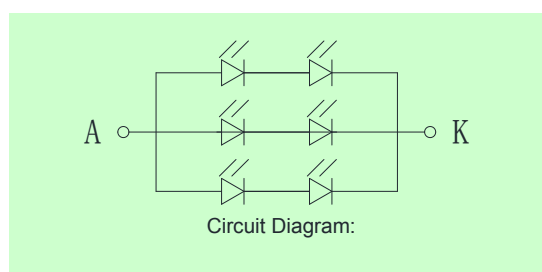
5.1. Backlight Characteristics

Item	Symbol	Condition	Min.	Typ.	Max.	Unit
Forward Voltage	V _F	Ta=25 °C, I _F =20mA/LED	5.6	6.4	6.8	V
Forward Current	I _F	Ta=25 °C, V _F =3.2V/LED		60		mA
Power dissipation	P _d		-	384	-	mW
LED Life Time(25 °C)	-	-	-	30,000	-	Hr
Uniformity	Avg		-	80	-	%
Drive method	Constant current					
LED Configuration	6 White LEDs (2 LEDs in one string and 3 groups in parallel)					

Note: LED life time defined as follows: The final brightness is at 50% of original brightness.

The environmental conducted under ambient air flow, at Ta=25±2 °C, 60%RH±5%, I_F=20mA/LED.

5.2. Backlighting circuit



6. Optical Characteristics

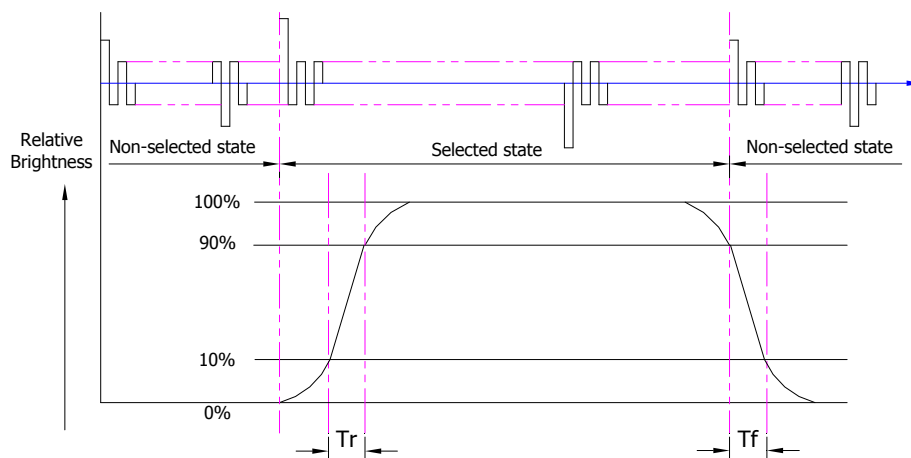
6.1. Optical Characteristics

$T_a=25^{\circ}\text{C}$, $V_{DD}=3.3\text{V}$

Backlight On (Transmissive Mode)	Item		Symbol	Condition	Specification			Unit
					Min.	Typ.	Max.	
	Luminance on TFT(I_f =20mA/LED)		Lv	Normally viewing angle $\theta_x = \varphi_y =0^\circ$	192	240	-	cd/m ²
	Contrast ratio(See 6.3)		CR		1000	1200	-	
	Response time (See 6.2)		T _R		-	30	40	ms
			T _F					
	Chromaticity Transmissive (See 6.5)	Red	X _R		0.599	0.649	0.699	
			Y _R		0.273	0.323	0.373	
		Green	X _G		0.267	0.317	0.367	
			Y _G		0.564	0.614	0.664	
		Blue	X _B		0.085	0.135	0.185	
			Y _B		0.046	0.096	0.146	
		White	X _W		0.235	0.285	0.335	
			Y _W		0.286	0.336	0.386	
	Viewing Angle (See 6.4)	Horizontal	θ _{X+}	Center CR≥10	80	85	-	Deg.
			θ _{X-}		80	85	-	
		Vertical	φ _{Y+}		80	85	-	
φ _{Y-}			80		85	-		
NTSC Ratio(Gamut)					55	60	-	%

6.2. Definition of Response Time

6.2.1. Normally Black Type (Negative)

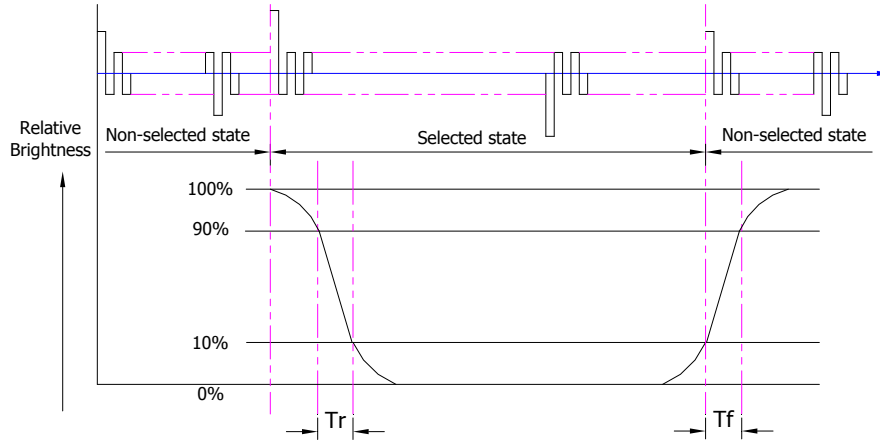


T_r is the time it takes to change from non-selected stage with relative luminance 10% to selected state with relative luminance 90%;

Tf is the time it takes to change from selected state with relative luminance 90% to non-selected state with relative luminance 10%.

Note: Measuring machine: LCD-5100

6.2.2. Normally White Type (Positive)



Tr is the time it takes to change from non-selected state with relative luminance 90% to selected state with relative luminance 10%;

Tf is the time it takes to change from selected state with relative luminance 10% to non-selected state with relative luminance 90%;

Note: Measuring machine: LCD-5100 or EQUI

6.3. Definition of Contrast Ratio

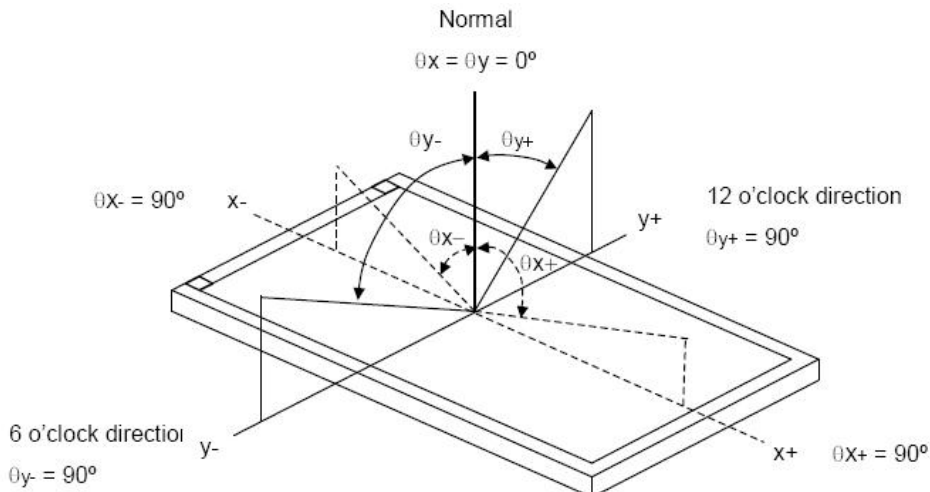
Contrast is measured perpendicular to display surface in reflective and transmissive mode.

The measurement condition is:

Measuring Equipment	Eldim or Equivalent
Measuring Point Diameter	3mm//1mm
Measuring Point Location	Active Area centre point
Test pattern	A: All Pixels white
	B: All Pixel black
Contrast setting	Maximum

Definitions: CR (Contrast) = Luminance of White Pixel / Luminance of Black Pixel

6.4. Definition of Viewing Angles



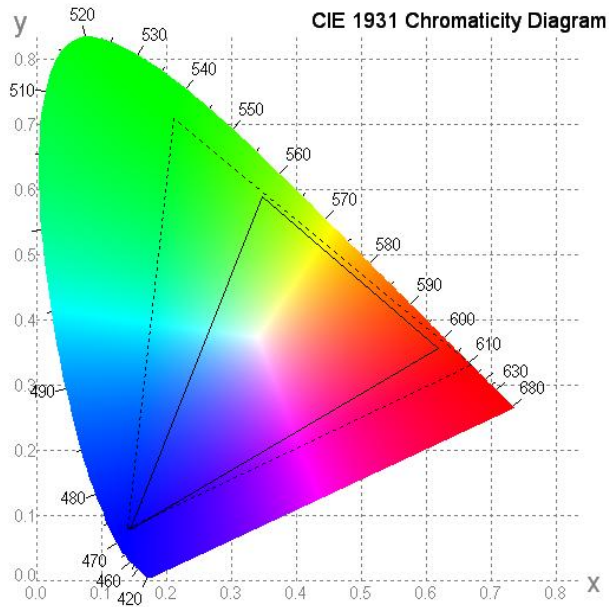
Measuring machine: LCD-5100 or EQUI

6.5. Definition of Color Appearance

R,G,B and W are defined by (x, y) on the IE chromaticity diagram

NTSC=area of RGB triangle/area of NTSC triangleX100%

Measuring picture: Red, Green, Blue and White (Measuring machine: BM-7)



6.6. Definition of Surface Luminance, Uniformity and Transmittance

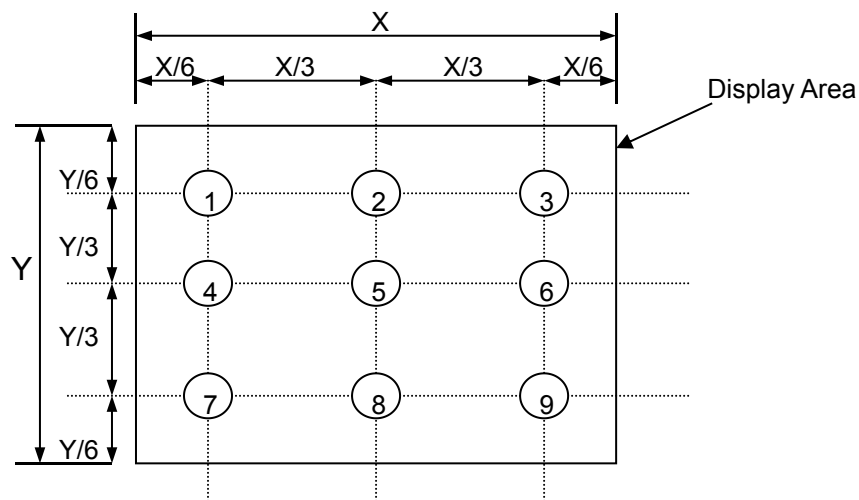
Using the transmissive mode measurement approach, measure the white screen luminance of the display panel and backlight.

6.6.1. Surface Luminance: $L_V = \text{average } (L_{P1}:L_{P9})$

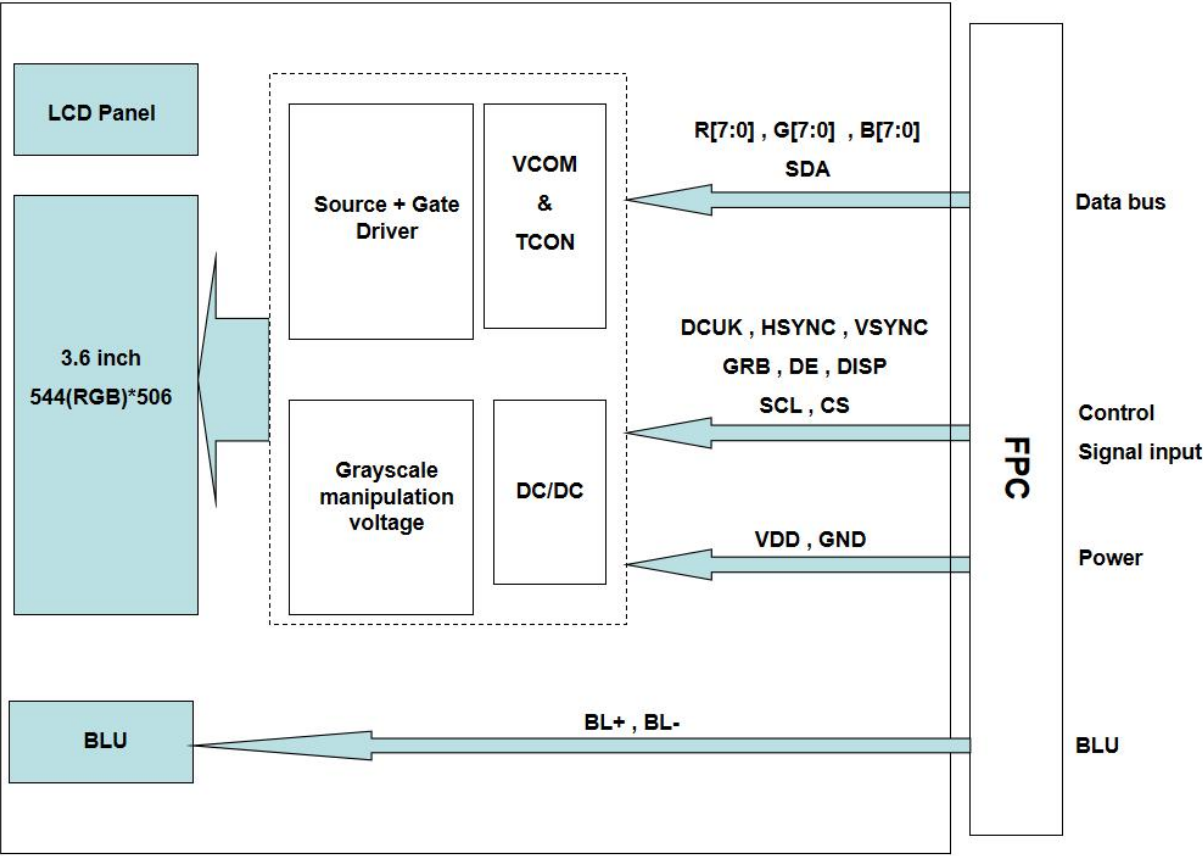
6.6.2. Uniformity = Minimal ($L_{P1}:L_{P9}$) / Maximal ($L_{P1}:L_{P9}$) * 100%

6.6.3. Transmittance = $L_V \text{ on LCD} / L_V \text{ on Backlight} * 100\%$

Note: Measuring machine: BM-7



7. Block Diagram and Power Supply



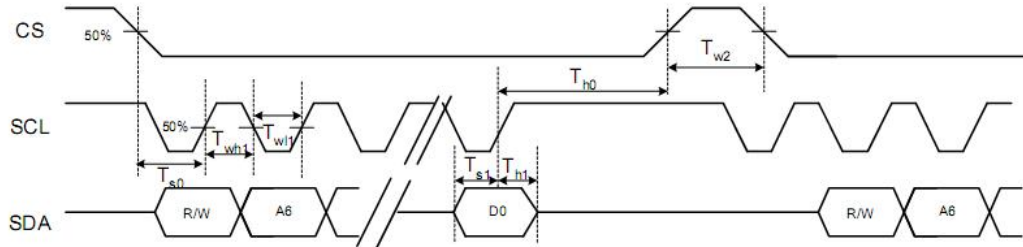
8. Interface Pins Definition

No.	Symbol	Function	Remark
1	BL-	LED cathode	
2	BL+	LED anode	
3	GND	Ground	
4	VDD	Power supply	
5	R0	Red data signal	
6	R1	Red data signal	
7	R2	Red data signal	
8	R3	Red data signal	
9	R4	Red data signal	
10	R5	Red data signal	
11	R6	Red data signal	
12	R7	Red data signal	
13	G0	Green data signal	
14	G1	Green data signal	
15	G2	Green data signal	
16	G3	Green data signal	
17	G4	Green data signal	
18	G5	Green data signal	
19	G6	Green data signal	
20	G7	Green data signal	
21	B0	Blue data signal	
22	B1	Blue data signal	
23	B2	Blue data signal	
24	B3	Blue data signal	
25	B4	Blue data signal	
26	B5	Blue data signal	
27	B6	Blue data signal	
28	B7	Blue data signal	
29	GND	Ground	
30	DCUK	Clock signal to sample each data	
31	DISP	DISP sets the display mode, "H" Normal display mode	
32	HSYNC	Horizontal synchronizing signal	
33	VSYNC	Vertical synchronizing signal	
34	DE	Input data enable control.	
35	SVDD	No Connect	
36	SVCL	No Connect	
37	GRB	Global reset pin. When GRB is "L", internal initialization procedure is executed.	
38	SDA	SPI Serial Data Input	

39	SCL	SPI Serial Clock	
40	CS	Chip select	

9. AC Characteristics

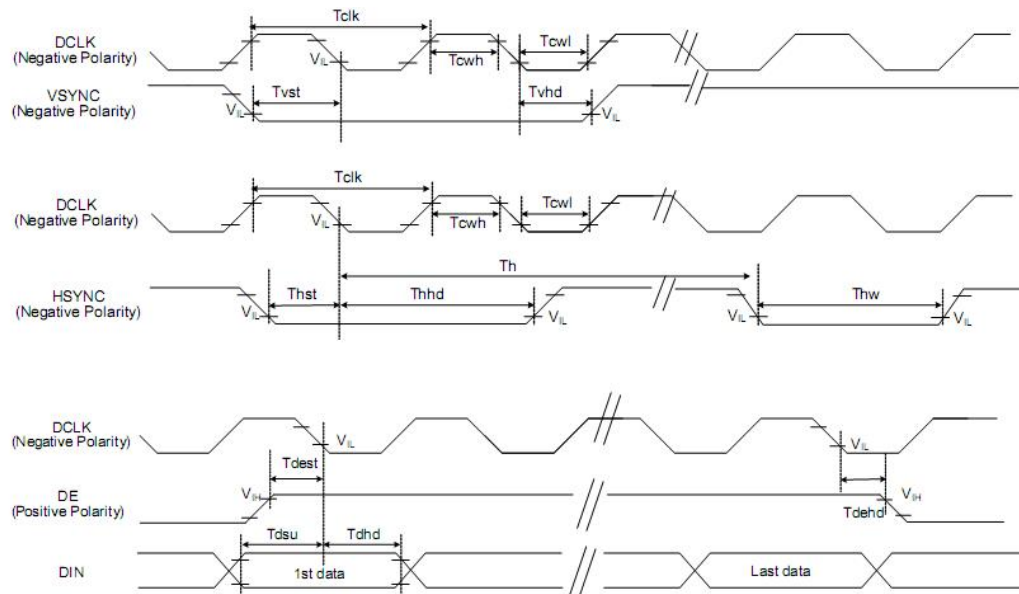
9.1. Timing for 3-wire SPI Interface



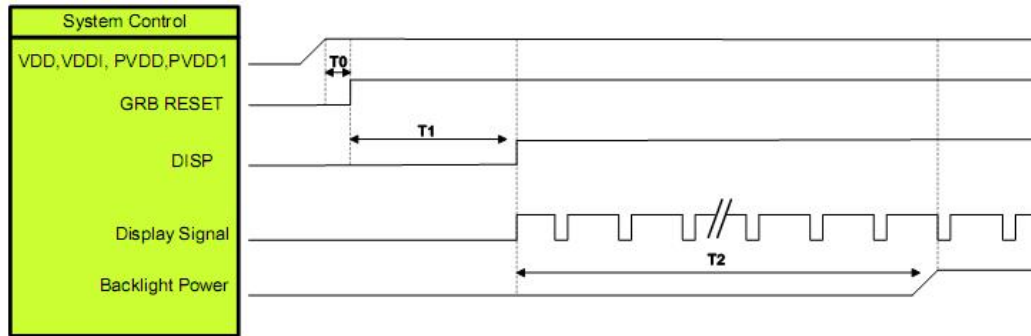
DC Electrical Characteristics (PVDD=VDD=VDDI= 3.3V, AGND= 0V, TA=25°C, Bare Chip)

Item	Symbol	Min.	Typ.	Max.	Unit	Conditions
CS Input Setup Time	T_{s0}	50	-	-	ns	
Serial Data Input Setup Time	T_{s1}	50	-	-	ns	
CS Input Hold Time	T_{h0}	50	-	-	ns	
Serial Data Input Hold Time	T_{h1}	50	-	-	ns	
SCL Write Pulse High Width	T_{wh1}	50	-	2000	ns	
SCL Write Pulse Low Width	T_{wl1}	50	-	2000	ns	
SCL Read Pulse High Width	T_{rh1}	300	-	2000	ns	
SCL Read Pulse Low Width	T_{rl1}	300	-	2000	ns	
CS Pulse High Width	T_{w2}	400	-	-	ns	

9.2. Timing for RGB Interface



9.3. Power ON Sequence

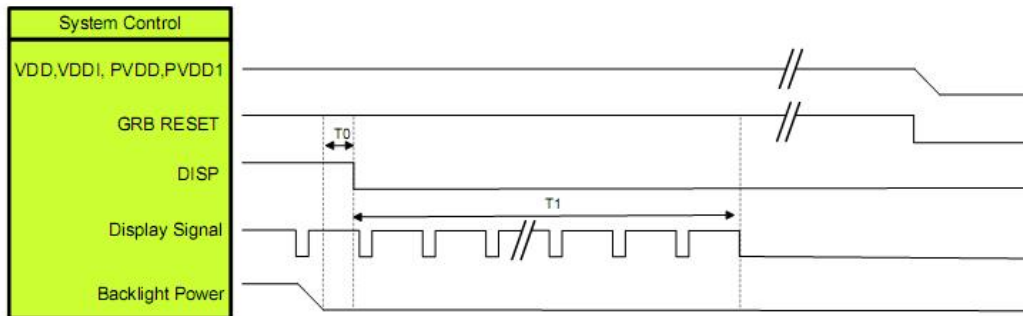


Symbol	Description	Min. Time	Unit
T0	System power stability to GRB RESET signal	0	ms
T1	GRB RESET= "High" to DISP="High"	10	ms
T2	Display Signal output to Backlight Power on	250	ms

Note :

1. When DISP pull "H" or "L", IC will execute the internal power on or power off procedures .Please be careful about the timing of DISP and do not interrupt it during power on or power off procedure, otherwise unexpected errors will occur.
2. RGB interface Display signal: DCLK; VSYNC; HSYNC; DE; DR[7:0]; DG[7:0]; DB[7:0]
- 3: LVDS interface Display signal: DCLK P/N; RX[3:0] P/N

9.4. Power OFF Sequence



Symbol	Description	Min. Time	Unit
T0	Backlight Power off to DISP="Low"	5	ms
T1	DISP="Low" to IC internal voltage discharge complete	100	ms

Note :

1. When DISP pull "H" or "L", IC will execute the internal power on or power off procedures .Please be careful about the timing of DISP and do not interrupt it during power on or power off procedure, otherwise unexpected errors will occur.
2. RGB interface Display signal: DCLK; VSYNC; HSYNC; DE; DR[7:0]; DG[7:0]; DB[7:0]
- 3: LVDS interface Display signal: DCLK P/N; RX[3:0] P/N

10. Quality Assurance

10.1.Purpose

This standard for Quality Assurance assures the quality of LCD module products supplied to customer.

10.2.Standard for Quality Test

10.2.1. Sampling Plan:

GB2828.1-2012

Single sampling, general inspection level II

10.2.2. Sampling Criteria:

Visual inspection: AQL 1.5.

Electrical functional: AQL 0.65.

10.2.3. Reliability Test:

Detailed requirement refer to Reliability Test Specification.

10.3.Nonconforming Analysis & Disposition

10.3.1. Nonconforming analysis:

10.3.1.1. Customer should provide overall information of non-conforming sample for their complaints.

10.3.1.2. After receipt of detailed information from customer, the analysis of nonconforming parts usually should be finished in one week.

10.3.1.3. If cannot finish the analysis on time, customer will be notified with the progress status.

10.3.2. Disposition of nonconforming:

10.3.2.1. Non-conforming product over PPM level will be replaced.

10.3.2.2. The cause of non-conformance will be analyzed. Corrective action will be discussed and implemented.

10.4.Agreement Items

Shall negotiate with customer if the following situation occurs:

10.4.1. There is any discrepancy in standard of quality assurance.

10.4.2. Additional requirement to be added in product specification.

10.4.3. Any other special problem.

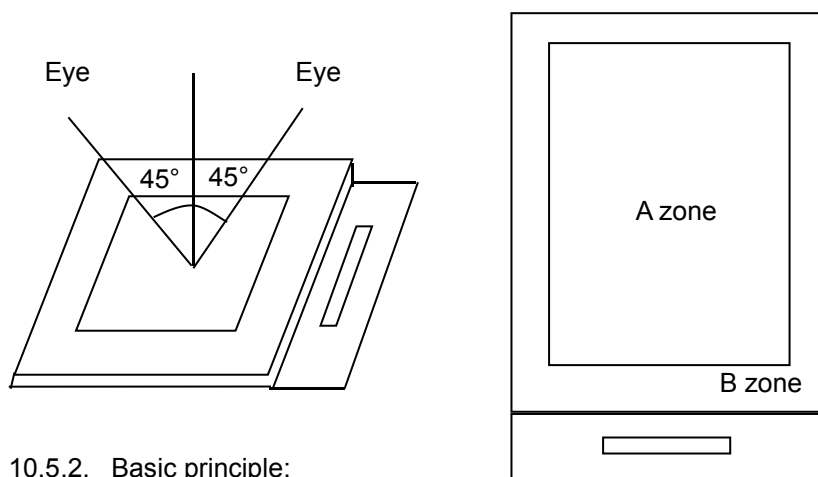
10.5.Standard of the Product Visual Inspection

10.5.1. Appearance inspection:

10.5.1.1. The inspection must be under illumination about 1000 – 1500 lx, and the distance of view must be at 30cm ± 2cm.

10.5.1.2. The viewing angle should be 45° from the vertical line without reflection light or follows customer's viewing angle specifications.

10.5.1.3. Definition of area: A Zone: Active Area, B Zone: Viewing Area,

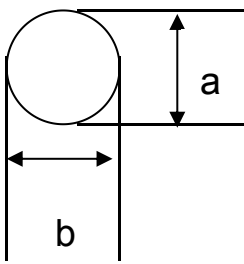


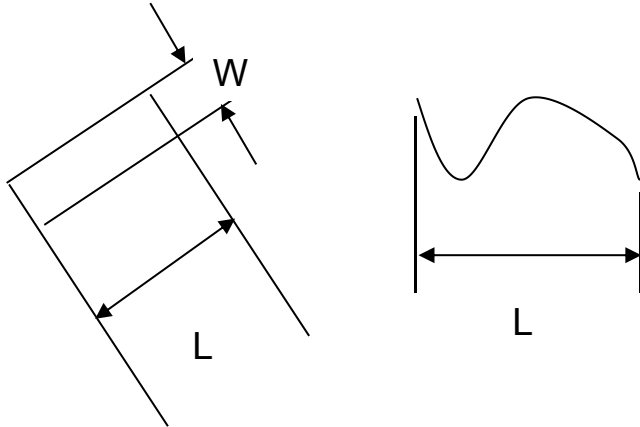
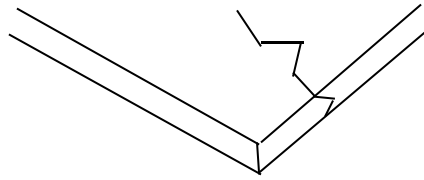
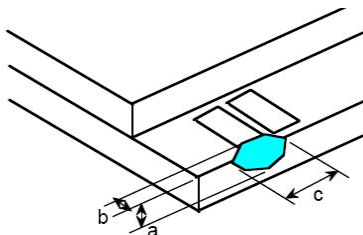
10.5.2. Basic principle:

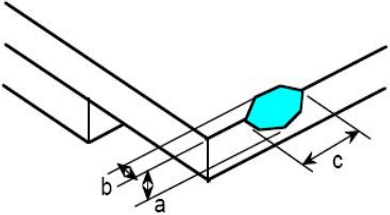
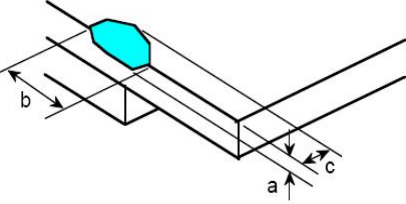
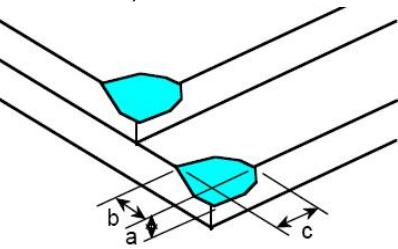
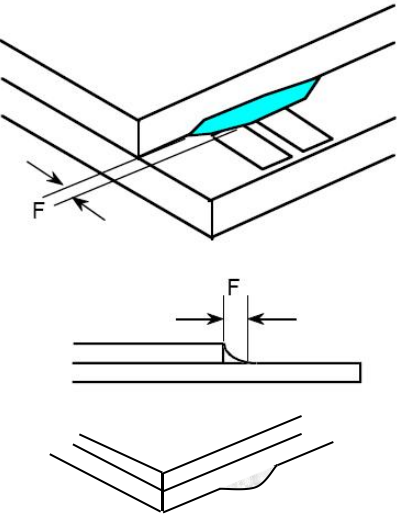
10.5.2.1. A set of sample to indicate the limit of acceptable quality level must be discussed by both us and customer when there is any dispute happened.

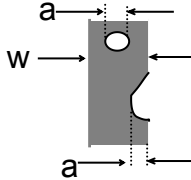
10.5.2.2. New item must be added on time when it is necessary.

10.6. Inspection Specification

No.	Item	Criteria (Unit: mm)																		
01	Black / White spot Foreign material (Round type) Pinholes Stain Particles inside cell. (Minor defect)	 $\phi = (a + b) / 2$	<table><tr><th>Size \ Area</th><th>Acc. Qty</th></tr><tr><td>$\phi \leq 0.10$</td><td>Ignore</td></tr><tr><td>$0.10 < \phi \leq 0.15$</td><td>2</td></tr><tr><td>$0.15 < \phi \leq 0.25$</td><td>1</td></tr><tr><td>$0.25 < \phi$</td><td>0</td></tr><tr><td>Total</td><td>2 no include $\phi \leq 0.10$</td></tr></table>	Size \ Area	Acc. Qty	$\phi \leq 0.10$	Ignore	$0.10 < \phi \leq 0.15$	2	$0.15 < \phi \leq 0.25$	1	$0.25 < \phi$	0	Total	2 no include $\phi \leq 0.10$					
		Size \ Area	Acc. Qty																	
$\phi \leq 0.10$	Ignore																			
$0.10 < \phi \leq 0.15$	2																			
$0.15 < \phi \leq 0.25$	1																			
$0.25 < \phi$	0																			
Total	2 no include $\phi \leq 0.10$																			
		Distance between 2 defects should more than 3mm apart.																		
02	Electrical Defect (Minor defect)	<table><tr><td></td><td>Display Area</td><td>Total</td><td rowspan="4">Note1</td></tr><tr><td>Bright dot</td><td>0</td><td>0</td></tr><tr><td>Dark dot</td><td>$N \leq 2$</td><td>$N \leq 2$</td></tr><tr><td>Total dot</td><td>$N \leq 2$</td><td>$N \leq 2$</td></tr><tr><td>Mura</td><td colspan="2">Not visible through 5% ND filter.</td><td>Note 2</td></tr></table>		Display Area	Total	Note1	Bright dot	0	0	Dark dot	$N \leq 2$	$N \leq 2$	Total dot	$N \leq 2$	$N \leq 2$	Mura	Not visible through 5% ND filter.		Note 2	
			Display Area	Total	Note1															
Bright dot	0	0																		
Dark dot	$N \leq 2$	$N \leq 2$																		
Total dot	$N \leq 2$	$N \leq 2$																		
Mura	Not visible through 5% ND filter.		Note 2																	
		Remark: 1. Bright dot caused by scratch and foreign object accords to item 1.																		

03	Black and White line Scratch Foreign material (Line type) (Minor defect)	<div></div> <table><tr><th>Length</th><th>Width</th><th>Acc. Qty</th></tr><tr><td>/</td><td>$W \leq 0.03$</td><td>ignore</td></tr><tr><td>$L \leq 2.5$</td><td>$0.03 < W \leq 0.05$</td><td>3</td></tr><tr><td>$L \leq 2.5$</td><td>$0.05 < W \leq 0.10$</td><td>2</td></tr><tr><td>/</td><td>$0.1 < W$</td><td>0</td></tr><tr><td colspan="2">Total</td><td>3</td></tr></table> <p>Distance between 2 defects should more than 3mm apart. Scratches not viewable through the back of the display are acceptable.</p>	Length	Width	Acc. Qty	/	$W \leq 0.03$	ignore	$L \leq 2.5$	$0.03 < W \leq 0.05$	3	$L \leq 2.5$	$0.05 < W \leq 0.10$	2	/	$0.1 < W$	0	Total		3
Length	Width	Acc. Qty																		
/	$W \leq 0.03$	ignore																		
$L \leq 2.5$	$0.03 < W \leq 0.05$	3																		
$L \leq 2.5$	$0.05 < W \leq 0.10$	2																		
/	$0.1 < W$	0																		
Total		3																		
04	Glass Crack (Minor defect)	<div></div> <p>Crack is potential to enlarge, any type is not allowed.</p>																		
05	Glass Chipping Pad Area: (Minor defect)	<div></div> <table><tr><th>Length and Width</th><th>Acc. Qty</th></tr><tr><td>$c > 3.0, b < 1.0$</td><td>1</td></tr><tr><td>$c < 3.0, b < 1.0$</td><td>3</td></tr><tr><td colspan="2">$a < \text{Glass Thickness}$</td></tr></table>	Length and Width	Acc. Qty	$c > 3.0, b < 1.0$	1	$c < 3.0, b < 1.0$	3	$a < \text{Glass Thickness}$											
Length and Width	Acc. Qty																			
$c > 3.0, b < 1.0$	1																			
$c < 3.0, b < 1.0$	3																			
$a < \text{Glass Thickness}$																				

06	<p>Glass Chipping Rear of Pad Area: (Minor defect)</p> 	<table><tr><th>Length and Width</th><th>Acc. Qty</th></tr><tr><td>$c > 3.0, b < 1.0$</td><td>1</td></tr><tr><td>$c < 3.0, b < 1.0$</td><td>2</td></tr><tr><td>$c < 3.0, b < 0.5$</td><td>4</td></tr><tr><td colspan="2">$a < \text{Glass Thickness}$</td></tr></table>	Length and Width	Acc. Qty	$c > 3.0, b < 1.0$	1	$c < 3.0, b < 1.0$	2	$c < 3.0, b < 0.5$	4	$a < \text{Glass Thickness}$	
Length and Width	Acc. Qty											
$c > 3.0, b < 1.0$	1											
$c < 3.0, b < 1.0$	2											
$c < 3.0, b < 0.5$	4											
$a < \text{Glass Thickness}$												
07	<p>Glass Chipping Except Pad Area: (Minor defect)</p> 	<table><tr><th>Length and Width</th><th>Acc. Qty</th></tr><tr><td>$c > 3.0, b < 1.0$</td><td>1</td></tr><tr><td>$c < 3.0, b < 1.0$</td><td>2</td></tr><tr><td>$c < 3.0, b < 0.5$</td><td>4</td></tr><tr><td colspan="2">$a < \text{Glass Thickness}$</td></tr></table>	Length and Width	Acc. Qty	$c > 3.0, b < 1.0$	1	$c < 3.0, b < 1.0$	2	$c < 3.0, b < 0.5$	4	$a < \text{Glass Thickness}$	
Length and Width	Acc. Qty											
$c > 3.0, b < 1.0$	1											
$c < 3.0, b < 1.0$	2											
$c < 3.0, b < 0.5$	4											
$a < \text{Glass Thickness}$												
08	<p>Glass Corner Chipping: (Minor defect)</p> 	<table><tr><th>Length and Width</th><th>Acc. Qty</th></tr><tr><td>$c < 3.0, b < 3.0$</td><td>Ignore</td></tr><tr><td colspan="2">$a < \text{Glass Thickness}$</td></tr></table>	Length and Width	Acc. Qty	$c < 3.0, b < 3.0$	Ignore	$a < \text{Glass Thickness}$					
Length and Width	Acc. Qty											
$c < 3.0, b < 3.0$	Ignore											
$a < \text{Glass Thickness}$												
09	<p>Glass Burr: (Minor defect)</p> 	<table><tr><th>Length</th><th>Acc. Qty</th></tr><tr><td>$F < 1.0$</td><td>Ignore</td></tr></table> <p>Glass burr don't affect assemble and module dimension.</p>	Length	Acc. Qty	$F < 1.0$	Ignore						
Length	Acc. Qty											
$F < 1.0$	Ignore											

10	FPC Defect: (Minor defect) 	10.1 Dent, pinhole width $a < w/3$. (w: circuitry width.) 10.2 Open circuit is unacceptable. 10.3 No oxidation, contamination and distortion.										
11	Bubble on Polarizer (Minor defect)	<table><tr><th>Diameter</th><th>Acc. Qty</th></tr><tr><td>$\varphi \leq 0.20$</td><td>Ignore</td></tr><tr><td>$0.20 < \varphi \leq 0.30$</td><td>4</td></tr><tr><td>$0.30 < \varphi \leq 0.50$</td><td>1</td></tr><tr><td>$0.50 < \varphi$</td><td>None</td></tr></table>	Diameter	Acc. Qty	$\varphi \leq 0.20$	Ignore	$0.20 < \varphi \leq 0.30$	4	$0.30 < \varphi \leq 0.50$	1	$0.50 < \varphi$	None
Diameter	Acc. Qty											
$\varphi \leq 0.20$	Ignore											
$0.20 < \varphi \leq 0.30$	4											
$0.30 < \varphi \leq 0.50$	1											
$0.50 < \varphi$	None											
12	Dent on Polarizer (Minor defect)	<table><tr><th>Diameter</th><th>Acc. Qty</th></tr><tr><td>$\varphi \leq 0.20$</td><td>Ignore</td></tr><tr><td>$0.20 < \varphi \leq 0.30$</td><td>4</td></tr><tr><td>$0.30 < \varphi \leq 0.50$</td><td>1</td></tr><tr><td>$0.50 < \varphi$</td><td>None</td></tr></table>	Diameter	Acc. Qty	$\varphi \leq 0.20$	Ignore	$0.20 < \varphi \leq 0.30$	4	$0.30 < \varphi \leq 0.50$	1	$0.50 < \varphi$	None
Diameter	Acc. Qty											
$\varphi \leq 0.20$	Ignore											
$0.20 < \varphi \leq 0.30$	4											
$0.30 < \varphi \leq 0.50$	1											
$0.50 < \varphi$	None											
13	Bezel	13.1 No rust, distortion on the Bezel. 13.2 No visible fingerprints, stains or other contamination.										
14	PCB	14.1 No distortion or contamination on PCB terminals. 14.2 All components on PCB must same as documented on the BOM/component layout. 14.3 Follow IPC-A-600F.										
15	Soldering	Follow IPC-A-610C standard										
16	Electrical Defect (Major defect)	The below defects must be rejected. 16.1 Missing vertical / horizontal segment, 16.2 Abnormal Display. 16.3 No function or no display. 16.4 Current exceeds product specifications. 16.5 LCD viewing angle defect. 16.6 No Backlight. 16.7 Dark Backlight. 16.8 Touch Panel no function.										

Remark: LCD Panel Broken shall be rejected. Defect out of LCD viewing area is acceptable.

10.7. Classification of Defects

10.7.1. Visual defects (Except no / wrong label) are treated as minor defect and electrical defect is major.

10.7.2. Two minor defects are equal to one major in lot sampling inspection.

10.8. Identification/marketing criteria

Any unit with illegible / wrong / double or no marking/ label shall be rejected.

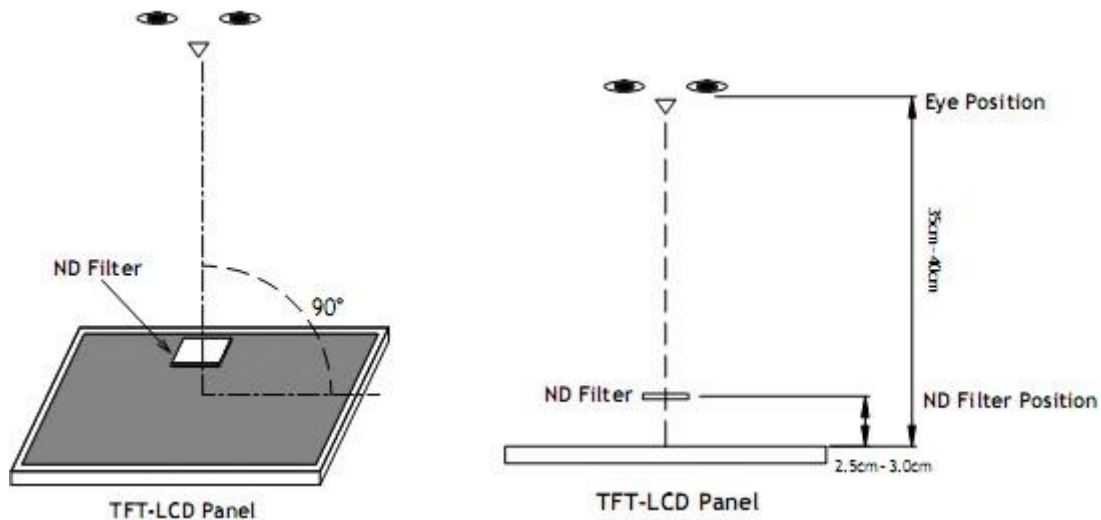
10.9. Packing

10.9.1. There should be no damage of the outside carton box, each packaging box should have one identical label.

10.9.2. Modules inside package box should have compliant mark.

10.9.3. All direct package materials shall offer ESD protection.

Note1: Bright dot is defined as the defective area of the dot is larger than 50% of one sub-pixel area.



Bright dot: The bright dot size defect at black display pattern. It can be recognized by 2% transparency of filter when the distance between eyes and panel is $350\text{mm} \pm 50\text{mm}$.

Dark dot: Cyan, Magenta or Yellow dot size defect at white display pattern. It can be recognized by 5% transparency of filter when the distance between eyes and panel is $350\text{mm} \pm 50\text{mm}$.

Note2: Mura on display which appears darker / brighter against background brightness on parts of display area.

11. Reliability Specification

No	Item	Condition	Quantity	Criteria
1	High Temperature Operating	70℃, 96Hrs	2	GB/T2423.2-2008
2	Low Temperature Operating	-20℃, 96Hrs	2	GB/T2423.1-2008
3	High Humidity Storage	50℃, 90%RH, 96Hrs	2	GB/T2423.3-2016
4	High Temperature Storage	80℃, 96Hrs	2	GB/T2423.2-2008
5	Low Temperature Storage	-30℃, 96Hrs	2	GB/T2423.1-2008
6	Thermal Cycling Test Storage	-20℃, 60min~70℃, 60min, 20 cycles.	2	GB/T2423.22-2012
7	Packing vibration	Frequency range:10Hz~50Hz Acceleration of gravity:5G X,Y,Z 30 min for each direction.	-	GB/T5170.14-2009
8	Electrical Static Discharge	Air: ±4KV 150pF/330 Ω 5 times Contact: ±2KV 150pF/330 Ω 5 times	2	GB/T17626.2-2018
9	Drop Test (Packaged)	Height:80 cm,1 corner, 3 edges, 6 surfaces.	-	GB/T2423.8-1995

Note1. No defection cosmetic and operational function allowable.

Note2. Total current Consumption should be below double of initial value

12. Precautions and Warranty

12.1. Safety

- 12.1.1. The liquid crystal in the LCD is poisonous. Do not put it in your mouth. If the liquid crystal touches your skin or clothes, wash it off immediately using soap and water.
- 12.1.2. Since the liquid crystal cells are made of glass, do not apply strong impact on them. Handle with care.

12.2. Handling

- 12.2.1. Reverse and use within ratings in order to keep performance and prevent damage.
- 12.2.2. Do not wipe the polarizer with dry cloth, as it might cause scratch. If the surface of the LCD needs to be cleaned, wipe it swiftly with cotton or other soft cloth soaked with petroleum IPA, do not use other chemicals.

12.3. Storage

- 12.3.1. Do not store the LCD module beyond the specified temperature ranges.
- 12.3.2. Strong light exposure causes degradation of polarizer and color filter.

12.4. Metal Pin (Apply to Products with Metal Pins)

12.4.1. Pins of LCD and Backlight

- 12.4.1.1. Solder tip can touch and press on the tip of Pin LEAD during the soldering

12.4.1.2. Recommended Soldering Conditions

Solder Type: Sn96.3~94-Ag3.3~4.3-Cu0.4~1.1

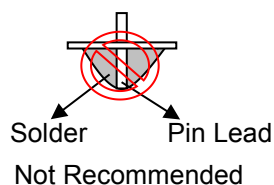
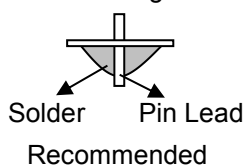
Maximum Solder Temperature: 370℃

Maximum Solder Time: 3s at the maximum temperature

Recommended Soldering Temp: 350±20℃

Typical Soldering Time: ≤3s

12.4.1.3. Solder Wetting



12.4.2. Pins of EL

- 12.4.2.1. Solder tip can touch and press on the tip of EL leads during soldering.

- 12.4.2.2. No Solder Paste on the soldering pad on the motherboard is recommended.

12.4.2.3. Recommended Soldering Conditions

Solder type: Nippon Alimit Leadfree SR-34, size 0.5mm

Recommended Solder Temperature: 270~290℃

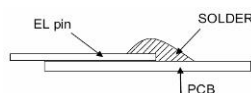
Typical Soldering Time: ≤2s

Minimum solder distance from EL lamp (body): 2.0mm

- 12.4.2.4. No horizontal press on the EL leads during soldering.

- 12.4.2.5. 180° bend EL leads three times is not allowed.
-

12.4.2.6. Solder Wetting

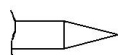


Recommended

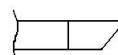


Not Recommended

12.4.2.7. The type of the solder iron:

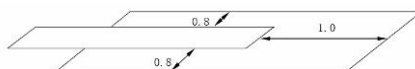


Recommended



Not Recommended

12.4.2.8. Solder Pad



12.5. Operation

- 12.5.1. Do not drive LCD with DC voltage
- 12.5.2. Response time will increase below lower temperature
- 12.5.3. Display may change color with different temperature
- 12.5.4. Mechanical disturbance during operation, such as pressing on the display area, may cause the segments to appear "fractured".
- 12.5.5. Do not connect or disconnect the LCM to or from the system when power is on.
- 12.5.6. Never use the LCM under abnormal condition of high temperature and high humidity.
- 12.5.7. Module has high frequency circuits. Sufficient suppression to the electromagnetic interface shall be done by system manufacturers. Grounding and shielding methods may be important to minimize the interference.
- 12.5.8. *Do not display the fixed pattern for long time (we suggest the time not longer than one hour) because it will develop image sticking due to the TFT structure.*

12.6. Static Electricity

- 12.6.1. CMOS LSIs are equipped in this unit, so care must be taken to avoid the electro-static charge, by ground human body, etc.
- 12.6.2. The normal static prevention measures should be observed for work clothes and benches.
- 12.6.3. The module should be kept into anti-static bags or other containers resistant to static for storage.

12.7. Limited Warranty

- 12.7.1. Our warranty liability is limited to repair and/or replacement. We will not be responsible for any consequential loss.
 - 12.7.2. If possible, we suggest customer to use up all modules in six months. If the module storage time over twelve months, we suggest that recheck it before the module be used.
 - 12.7.3. After the product shipped, any product quality issues must be feedback within three months, otherwise, we will not be responsible for the subsequent or consequential events.
-

13. Packaging

TBD

1 2 3 4 5 6

3.6" TFT
544RGB560DOTS

LCM 95.36±0.1
95.16±0.2(TFT&CF)
89.76±0.2(AA)

(0.1)
(2.7)

LCM 2.21±0.2
1.15±0.1

LCM 91.66±0.1
91.46±0.2(TFT)
88.2±0.2(CF)
83.49±0.2(AA)

(0.1)
(2.8)

LCM 91.66±0.1

3.2

37.43±0.5

4.47±0.1

30±0.5

37.5±0.5

5.5±0.5

20.5±0.1

40

1

40

20.5±0.1

W=0.35
0.5±0.1

P0.5*39=19.5

3.5±0.3

0.3±0.05

Contact side

Stiffener

1

21

22

23

24

25

26

27

28

29

30

31

32

33

34

35

36

37

38

39

40

BL-

BL+

GND

VDD

R0

R1

R2

R3

R4

R5

R6

R7

G0

G1

G2

G3

G4

G5

G6

G7

B0

B1

B2

B3

B4

B5

B6

B7

GND

DCUK

DISP

2HSYNC

3VSYNC

DE

SVDD

SVCL

GRB

SDA

SCL

CS

REV A

REVISION RECORD

First Issue

Change FPC and product definition

SIGN LJB

DATE 2022.07.07

SIGN LJB

DATE 2022.08.15

VERSION B

DATE 2022.08.15

SCALE 1/1

UNIT mm

APPROVED

CHECKED

DRAWN

MODEL NAME: YDP LCD 1R 360 SR

TITLE: Outline

FILE NAME:

NOTES:

1. Display size: 3.6" TFT
2. Viewing direction: Full view
3. Display mode: Transmissive/Normal Black
4. Operation temperature: -20°C~+70°C
5. Storage temperature: -30°C~+80°C
7. Backlight : White(6LED)/6.4V(TYP)/60mA
8. Lumiance 240(TYP)cd/m2
6. Driver IC: ST72566
7. Logic power supply voltage: 3.3V
8. ROHS must be complied

* Unspecification tolerance are ± 0.2mm

1 2 3 4 5 6